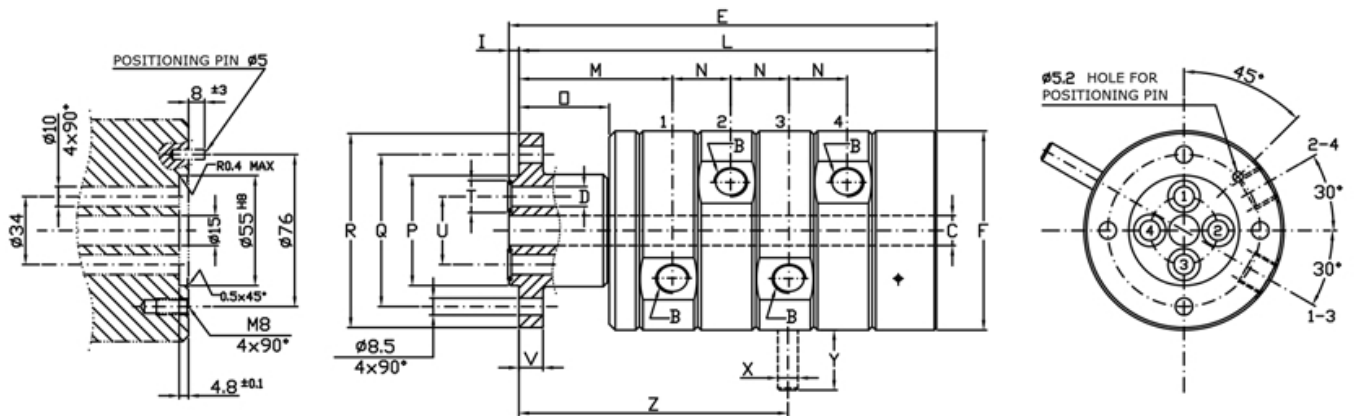
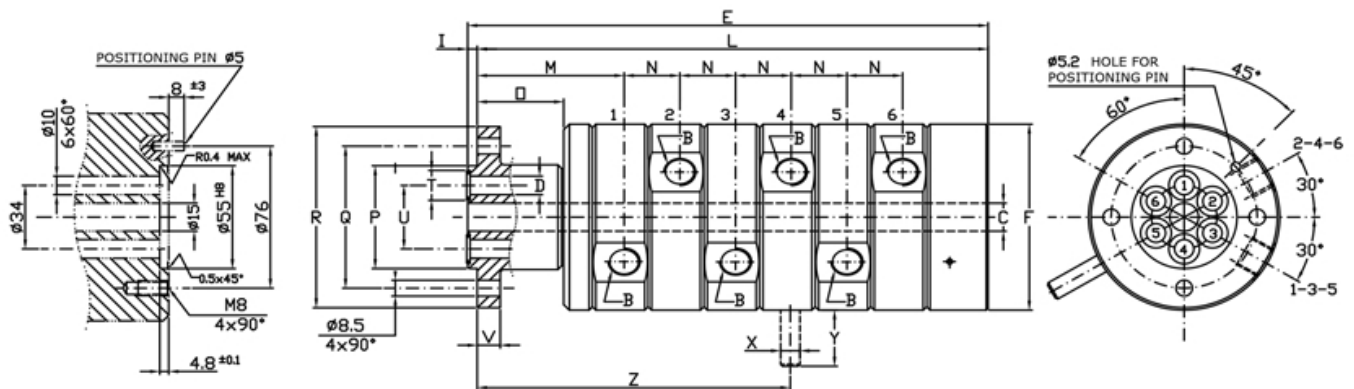


Ordering code		Giunti doppio passaggio - Double passage unions 2-Wege Drehdurchführungen - Juntas de doble vía																			
Hydraulic oil	Air	B	ϕC	ϕD	E	ϕF	I	L	M	N	O	ϕP	ϕQ	ϕR	ϕT	ϕU	V	ϕX	Y	Z	Kg
M210-200-F15	M210-400-F15	G 3/8"	15	10 2x180°	155	99,5	5	150	76,5	29	45	55	76	97	16	34	12	10	30	105	5,5



Ordering code		Giunti a quattro passaggi - Four passage unions 4-Wege Drehdurchführungen - Juntas de cuatro vías																			
Hydraulic oil	Air	B	ϕC	ϕD	E	ϕF	I	L	M	N	O	ϕP	ϕQ	ϕR	ϕT	ϕU	V	ϕX	Y	Z	Kg
M410-200-F15	M410-400-F15	G 3/8"	15	10 4x90°	213	99,5	5	208	76,5	29	45	55	76	97	16	34	12	10	30	134	7,5



Ordering code		Giunti a sei passaggi - Six passage unions 6-Wege Drehdurchführungen - Juntas de seis vías																			
Hydraulic oil	Air	B	ϕC	ϕD	E	ϕF	I	L	M	N	O	ϕP	ϕQ	ϕR	ϕT	ϕU	V	ϕX	Y	Z	Kg
M610-200-F15	M610-400-F15	G 3/8"	15	10 6x60°	271	99,5	5	266	76,5	29	45	55	76	97	16	34	12	10	30	163	9,5