



ENAPART



93 S Railroad Avenue Unit C
Bergenfield NJ 07621 USA
www.enapart.com
sales@enapart.com



Via del Canneto 35,
Borgosatollo, Brescia - Italia
www.enapart.it
vendite@enapart.it



Barbaros Mah. Ihlamur Bul. Aĝaoĝlu
My Newwork No:3/15 Ataşehir / İstanbul
www.enapart.net
satis@enapart.net



PRIVADA 10 B SUR #3908 COL.
ANZUREZ, C.P. 72530, PUEBLA, PUE
www.enapart.com.mx
sales@enapart.com.mx



Friedrich-Ebert-Anlage 36, 60325
Frankfurt am Main, Germany
www.enapart.de
anfrage@enapart.de



4 boulevard Carnot, 95400
villiers-le-bel, Paris, France
www.enapart.fr
sales@enapart.fr



65049, ОДЕСА, ВУЛИЦЯ ІВАНА
ФРАНКА, БУДИНОК 55, ПОВЕРХ 3
www.enapart.com.ua
sales@enapart.com.ua



MUNICIPIUL BUCUREȘTI, SECTOR 3,
B-DUL BASARABIA, NR.250, CORP P+5
www.enapart.ro
sales@enapart.ro



〒584-0023 大阪府富田林市若松町
東2丁目2番16号
www.enapart.co.jp
sales@enapart.co.jp



PLAZA NUESTRA SEÑORA DE LAS
NIEVES 12 ,LOCAL ,50012,ZARAGOZA
www.enapart.es
ventas@enapart.es



Складова база „Онгъл“, Склад А2, п.к.
4006, гр. Пловдив, България
www.enapart.bg
sales@enapart.bg



3 Austin Mews, High Street, Hemel
Hempstead, HP1 3AF , United Kingdom
www.enapart.co.uk
sales@enapart.co.uk

Lumolux S

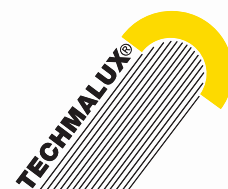
System of protection	IP67
Series	Ø 70 mm
Length	524 mm - 1871 mm
Protection tube	K = PMMA G = Borosilicate glass
Power	2 x 8 W - 58 W
Voltage	24 V / 230 V
Luminous	770 - 4800 Lumen

CHARACTERISTICS / ADVANTAGE

- traditional machine lamp - proven concept!
- different versions - for almost every need
- easy installation
- easy light-bulb change
- tube lamp with conventional light source
- IP 67
- conventional or electronic ballast



Tested and awarded.
Development and production of TECHMALUX-lamps
conform to European standards.



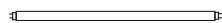
Lumolux S



TYPE	PROTECTION TUBE	ITEM NO	POWER	LUMINOUS / LUMEN	LENGTH / MM	BALLAST / VOLTAGE
Lumolux S/036	K	591-015-001	36 W	2850	1368	213-800-019 / KVG 230 V
	G	591-015-002	36 W	2850	1368	213-800-019 / KVG 230 V
Lumolux S/218	K	591-004-001	18 W	1150	921	KVG 230 V built-in
	G	591-004-002	18 W	1150	921	KVG 230 V built-in
Lumolux S/236	K	591-005-001	36 W	2850	1531	KVG 230 V built-in
	G	591-005-002	36 W	2850	1531	KVG 230 V built-in
Lumolux S/258	K	591-006-001	58 W	4800	1871	KVG 230 V built-in
	G	591-006-002	58 W	4800	1871	KVG 230 V built-in
Lumolux SE/418	K	591-034-001	18 W	1150	921	EVG 24 V, AC built-in
	G	591-034-002	18 W	1150	921	EVG 24 V, AC built-in

Our Lumolux-lamps are available in different versions. More information available on request!

SPARE PARTS

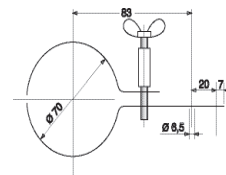


replacement lamp 18 W
T26
item no.: 213-920-005

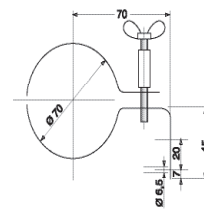
replacement lamp 36 W
T26
item no.: 213-920-006

replacement lamp 58 W
T26
item no.: 213-920-007

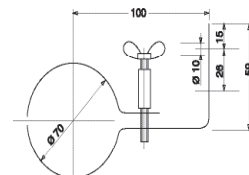
FASTENING with fixing clamp



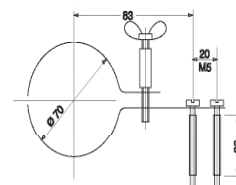
item no.:
599-001-001



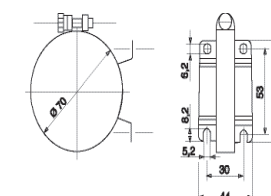
item no.:
599-001-002



item no.:
599-001-003



item no.:
599-001-004



item no.:
599-001-016

Lumolux K

System of protection	IP67
Series	Ø 70 mm
Length	571 mm - 1250 mm
Protection tube	K = PMMA G = borosilicate glass
Power	36 W - 2 x 36 W
Voltage	230 V
Ballast	KVG separate or built-in
Luminous	2900 - 5800 Lumen

CHARACTERISTICS / ADVANTAGE

- traditional machine lamp - proven concept!
- different versions - for almost every need!
- easy installation
- easy light-bulb change
- tube lamp with traditional light source
- inexpensive replacement lamps available
- conventional ballast (KVG)



Tested and awarded.
Development and production of TECHMALUX-lamps
conform to European standards.



Lumolux K



TYPE	PROTECTION TUBE	ITEM NO	POWER	LUMINOUS / LUMEN	LENGTH / MM	BALLAST / VOLTAGE
Lumolux K / 036	K	591-022-001	36 W	2900	571	213-800-019 / KVG 230 V
	G	591-022-002	36 W	2900	571	213-800-019 / KVG 230 V
Lumolux K / 218	K	591-017-001	18 W	1250	535	KVG 230 V built-in
	G	591-017-002	18 W	1250	535	KVG 230 V built-in
Lumolux K / 224	K	591-018-001	24 W	2000	630	KVG 230 V built-in
	G	591-018-002	24 W	2000	630	KVG 230 V built-in
Lumolux K / 236	K	591-019-001	36 W	2900	725	KVG 230 V built-in
	G	591-019-002	36 W	2900	725	KVG 230 V built-in

Our Lumolux-lamps are available in different versions. More information available on request!

SPARE PARTS



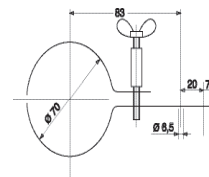
replacement lamp 18 W
TC-L
item no.: 213-920-008

replacement lamp 24 W
TC-L
item no.: 213-920-009

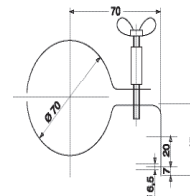
replacement lamp 36 W
TC-L
item no.: 213-920-010

replacement lamp 40 W
TC-L
item no.: 213-920-036

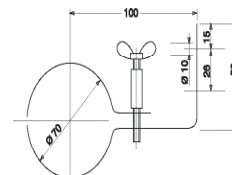
FASTENING with fixing clamp



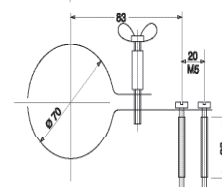
item no.:
599-001-001



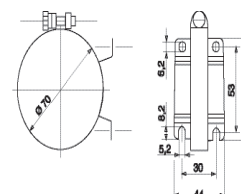
item no.:
599-001-002



item no.:
599-001-003



item no.:
599-001-004



item no.:
599-001-016

Lumolux KE

System of protection	IP67
Series	Ø 70 mm
Length	571 mm - 758 mm
Protection tube	K = PMMA G = Borosilicate glass
Power	36 W
Voltage	24 V / 230 V
Ballast	EVG, built-in
Luminous	2900 Lumen

CHARACTERISTICS / ADVANTAGE

- traditional machine lamp - proven concept!
- different versions - for almost every need
- easy installation
- easy light-bulb change
- tube lamp with conventional light source
- inexpensive replacement lamps available
- electronic ballast (EVG)



Tested and awarded.
Development and production of TECHMALUX-lamps
conform to European standards.



Lumolux KE



TYPE	PROTECTION TUBE	ITEM NO	POWER	LUMINOUS / LUMEN	LENGTH / MM	BALLAST / VOLTAGE
Lumolux KE/236	G	591-050-010	36 W	2900	571	EVG 230 V / 50-60 Hz built-in
Lumolux KE/236	K	591-050-021	36 W	2900	758	EVG 230 V / 50-60 Hz built-in
	G	591-050-022	36 W	2900	758	EVG 230 V / 50-60 Hz built-in
Lumolux K/436	K	591-056-001	36 W	2900	725	EVG 24 V, DC built-in
	G	591-056-002	36 W	2900	725	EVG 24 V, DC built-in

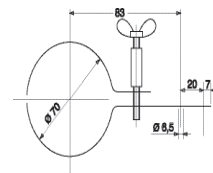
Our Lumolux-lamps are available in different versions. More information available on request!

SPARE PARTS

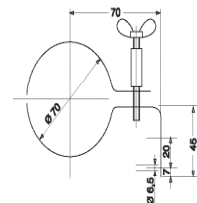


replacement lamp 36 W
TC-L
item no.: 213-920-010

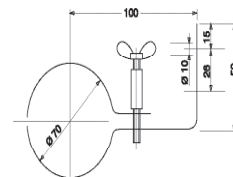
FASTENING with fixing clamp



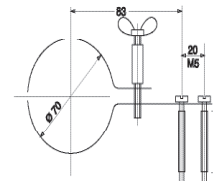
item no.:
599-001-001



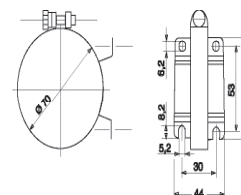
item no.:
599-001-002



item no.:
599-001-003



item no.:
599-001-004



item no.:
599-001-016

Lumolux K2

System of protection	IP67
Series	Ø 70 mm
Length	200 - 250 mm
Protection tube	G = Borosilicate glass
Power	13 - 26 W
Voltage	24 V / 230 V
Ballast	EVG / KVG
Luminous	900 - 1800 Lumen

CHARACTERISTICS / ADVANTAGE

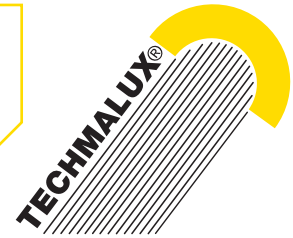
- electrical connection in dry area
- power cable outside cutting area and wet area
- easy installation, requires only 1 nut
- easy lamp replacement
- tube lamp with traditional light source
- different versions available
- electronic ballast (EVG) or conventional ballast (KVG)



Tested and awarded.
Development and production of TECHMALUX-lamps
conform to European standards.



Lumolux K2

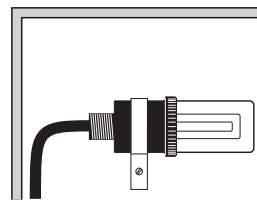


TYPE	PROTECTION TUBE	ITEM NO	POWER	LUMINOUS / LUMEN	LENGTH / MM	BALLAST / VOLTAGE
Lumolux K2E / 413	G	591-023-010	13 W	900	200	EVG 24 V, DC built-in
Lumolux K2E / 213	G	591-026-001	13 W	900	200	EVG 230 V, 50-60 Hz built-in
Lumolux K2E / 418	G	591-024-001	18 W	1200	225	EVG 24 V, DC built-in
Lumolux K2E / 218	G	591-027-001	18 W	1200	225	EVG 230 V, 50-60 Hz built-in
Lumolux K2 / 026	G	591-042-001	26 W	1800	250	213-800-046 / KVG 230 V

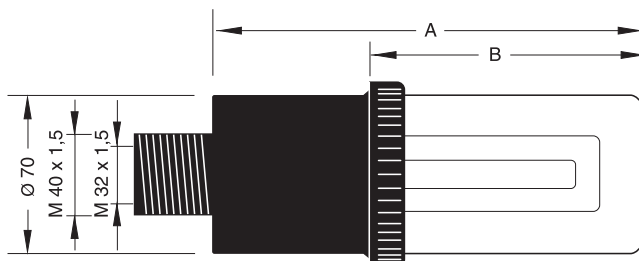
FASTENING with hexagon nut M 40 x 1,5



FASTENING with fixing clamp



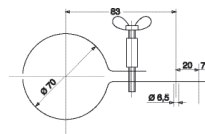
DRAWING



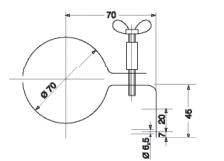
	A	B
13 W	200	125
18 W	225	150
26 W	250	175

SPARE PARTS

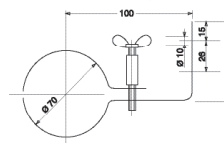
several replacement lamps available. More information on request!



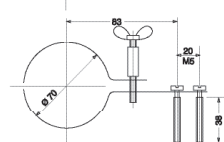
item no.:
599-001-001



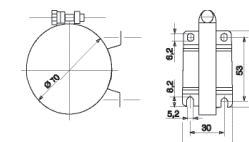
item no.:
599-001-002



item no.:
599-001-003



item no.:
599-001-004



item no.:
599-001-016

Lumolux K2 E

System of protection	IP67
Series	Ø 70 mm
Length	215 mm / 240 mm
Protection tube	G = Borosilicate glass
Power	18 W
Voltage	24 V oder 230 V
Ballast	EVG, built-in
Luminous	1200 Lumen

CHARACTERISTICS / ADVANTAGE

- traditional machine lamp - proven concept!
- different versions - for almost every need
- IP 67
- easy installation
- easy lamp replacement
- inexpensive spare parts available
- electronic ballast (EVG)



Tested and awarded.
Development and production of TECHMALUX-lamps
conform to European standards.



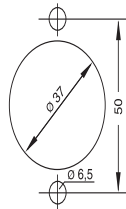
Lumolux K2 E



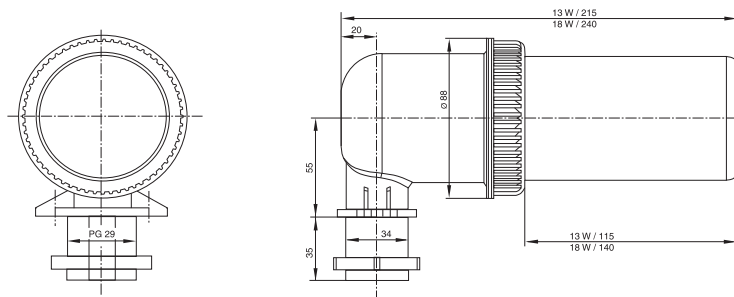
TYPE	PROTECTION TUBE	ITEM NO	POWER	LUMINOUS / LUMEN	LENGTH / MM	IP	BALLAST / VOLTAGE
Lumolux K2 E / 418	G	591-024-101	18 W	1200	215	67	EVG 24 V, DC built-in
Lumolux K2 E / 218	G	591-027-101	18 W	1200	240	67	EVG 230 V, 50-60 Hz built-in

FASTENING

fastening bore in machine body with hexagonal nut PG 29



DRAWING



SPARE PARTS



replacement lamp 18 W
TC-DEL
item no.: 213-920-014