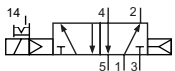


Technical details

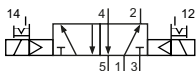
Connection	Sub-base mounting
Nominal size	3 mm
Temperature range	-10°C ... +70°C
Medium	Filtered, oil-free and dried compressed air according to ISO 8573-1:2010, Class 7:2:4, instrument air, free of aggressive additives. Differing the pressure dew point must be at least 10°C below lowest occurring ambient temperature.
Materials	Body: Al (anodized), plastic, seals: NBR, inner parts: Al, steel and plastic
Protection	IP 65 according to EN 60529



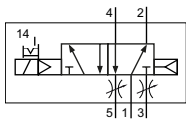
Electrically operated spool valve. The manual override is detent and is operated by screw driver. Gaskets and screws are part of delivery.

5/2-way-valves


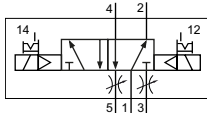
MC-20-510-HN-xxx
5/2-way, single solenoid, air spring return



MC-20-520-HN-xxx
5/2-way, double solenoid

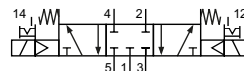


MD-20-510-HN-xxx
5/2-way, single solenoid, air spring return, with exhaust throttles

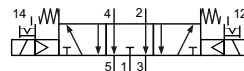


MD-20-520-HN-xxx
5/2-way, double solenoid, with exhaust throttles

Please complete: xxx = electrical option

5/3-way-valves


MC-20-530-HN-xxx
5/3-way, center position closed



MC-20-533-HN-xxx
5/3-way, center position exhausted

Electrical options

Nominal voltage	Power consumption	Specifics	Plug connection* ¹	-xxx Plug connections	
				opposite 1,2,3,4,5	at 1,2,3,4,5
12 V DC	1 W		Form C industrial norm	-411	-441
24 V DC	1 W		Form C industrial norm	-412	-442

*¹ Plug socket not included, suitable plug sockets see page 03.

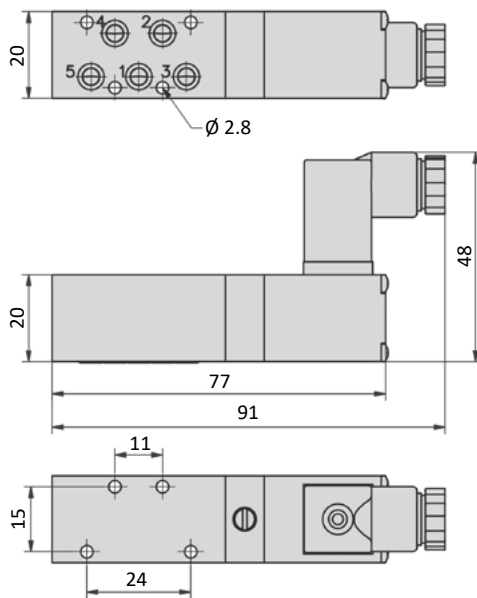
Series MC-20 and MD-20

Technical data

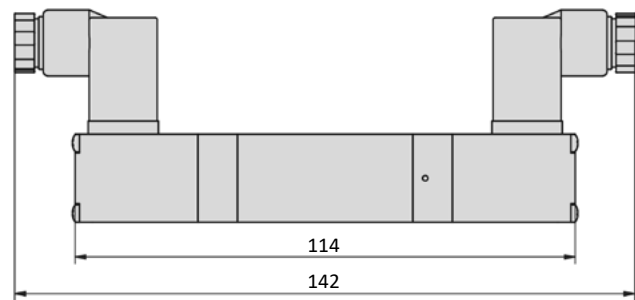
Model-no.:	MC-20-510 MD-20-510	MC-20-520 MD-20-520	MC-20-530	MC-20-533
Operating pressure (bar)	2.5 ... 8	2.5 ... 8	3 ... 8	3 ... 8
Pilot pressure (bar)	2.5 ... 8	2.5 ... 8	3 ... 8	3 ... 8
Flow rate (Nl/min)	220	220	220	220
Response time (ms) at 6 bar	on: 12 off: 12	on: 11 off: 11	on: 15 off: 22	on: 15 off: 22
Weight (kg)	0.100	0.156	0.162	0.162

Dimensions

MC-20-510-HN



MC-20-520-HN, MC-20-53x-HN



Form C Industriennorm

Baubreite	15 mm
Kontaktabstand	9,4 mm
Kontakte	2P + E
Schutzart	IP 65 nach EN 60529 in Verbindung mit Flachdichtung
Einsatz für Baureihe	M-20, MC-20, MD-20, MS-20



Model-no.:	28-ST-02-01	28-ST-09-112	28-ST-09-127	28-ST-10-112	28-ST-10-127	28-ST-10-K3-112 *
Voltage (AC/DC)	0 - 250 V	10 - 50 V	70 - 250 V	24 V	230 V	24 V
Status indicator	no	yes	yes	yes	yes	yes
Protective circuit	no	no	no	yes (varistor)	yes (varistor)	yes (varistor)
Connecting cable	without	without	without	without	without	3 m
Wire cross section	max. 0.75 mm ²	max. 0.75 mm ²	max. 0.75 mm ²	max. 0.75 mm ²	max. 0.75 mm ²	3 x 0.5 mm ²
Ø Connecting cable	4 - 6 mm	4 - 6 mm	4 - 6 mm	4 - 6 mm	4 - 6 mm	

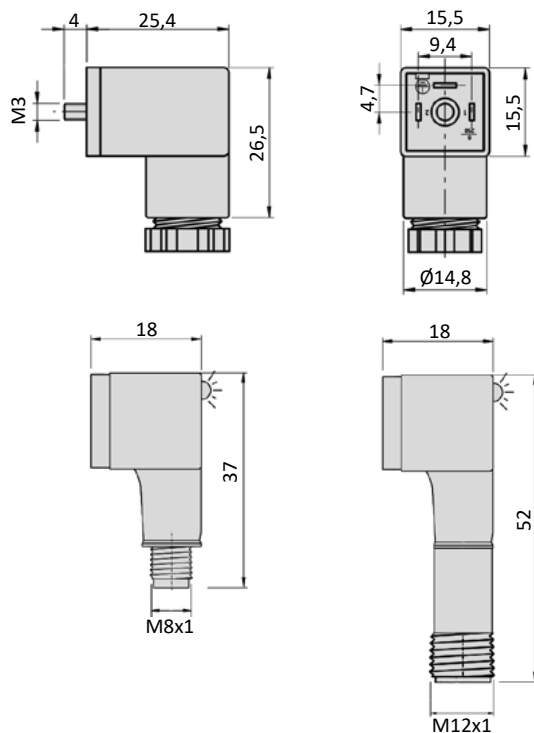
Model-no.:	28-ST-02-2-05	28-ST-02-2-07
Voltage (AC/DC)	24 V	24 V
Status indicator	yes	yes
Protective circuit	yes (varistor)	yes (varistor)
Connection	M8	M12



* These plug sockets are fitted with integrated flat gaskets.

Abmessungen

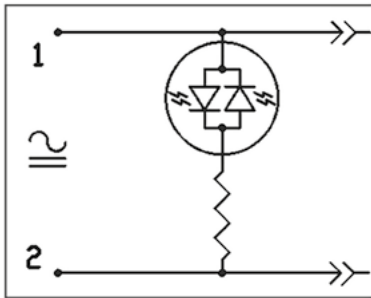
Form C Industriennorm



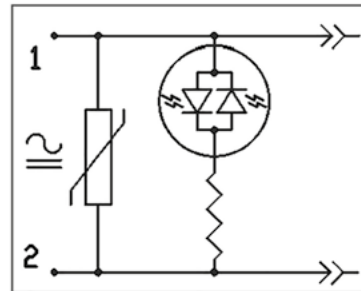
Plug sockets

Electrically circuits

Status indicator (LED)

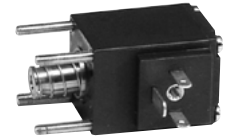


Status indicator (LED) and protective circuit (varistor)



Form C industrial norm

Overall width	20 mm
Contact distance	9,4 mm
Contacts	2P + E
Protection	IP 65 according to EN 60529 with connected plug socket
Duty cycle	100 %
Temperature range*	-20°C...+50°C
Voltage tolerance	± 10 %
For use with series	M-20, MS-20, MC-20, MD-20

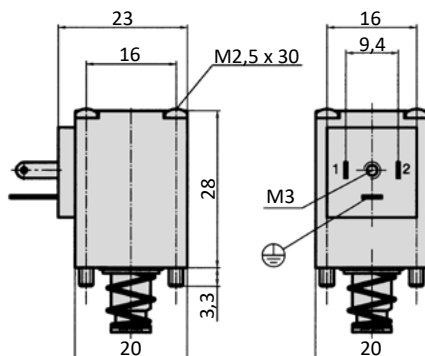


* The max. applicable operating temperature, depends on the temperature specification of the used valve.

Model-no.:	23-M-20-411	23-M-20-412
Voltage	12 V DC	24 V DC
Power consumption DC	2 W	2 W
Power consumption AC	-	-

Dimensions

Form C industrial norm



Voltage code

- HN * - * * *				
Manual override	Coil and plug options	Coil type	Manual override position on side of	Voltage
HN detent	0 ATEX 2GD, encapsulated with casting compound width 30 mm	23-SP-037	0 without indication ports 1/3/(5)	0 without indication
HNR detent	1 with coil and plug	according to valve	1 DC ports 1/3/(5)	1 12 V
HNT non-detent	2		2 AC ports 1/3/(5)	2 24 V
	3 with coil, power consumption different from standard, without plug	shape according valve series	3 DC, low power consumption ports 1/3/(5)	3 42 V
	4 with coil, without plug	according to valve	4 DC ports 2/(4)	4 48 V
	5 without coil	no	5 AC ports 2/(4)	5 110 V
	6 without pilot valve	no	6 DC, low power consumption ports 2/(4)	6 115 V
	7 with coil, with enhanced humidity resistance, without plug	according to valve	7 without indication ports 2/(4)	7 230 V
	8 with coil, with enhanced humidity resistance, with plug	according to valve		8 240 V
	9 ATEX 2GD, intrinsically safe, with plug width 30 mm	23-SP-038		9
	A ATEX 3GD, without plug, width 30 mm	23-SP-040		A 4 V
	B ATEX 3GD, with plug, width 30 mm	23-SP-040		B 6 V
	C ATEX 3GD, without plug, width 22 mm	23-SP-041		C 8 V
	D			D 61 V
	E			E 36 V
	F with coil, with enhanced humidity resistance, without plug, low temperature version	23-SP-011-1-711 23-SP-011-1-712		F 9 V
	G			
	H with coil shape B according to DIN EN 175301-803, with plug	23-SP-011-G		
	I with coil shape B according to DIN EN 175301-803, without plug	23-SP-011-G		
	J with coil shape A according to DIN EN 175301-803, without plug (if not standard)	23-SP-016		
	K with coil shape A according to DIN EN 175301-803, with plug (if not standard)	23-SP-016		
	L with coil, with plug with LED and protective circuit	according to valve		
	M with coil, with plug with LED, without protective circuit	according to valve		
	N with coil with M12 connection	according to valve		
	O with coil with M12 connection with LED and protective circuit	according to valve		
	P without connector bridge, without plug			
	Q with coil with with cable	according to valve		
	R with cable up to 1 m length	according to valve		
	S with connector bridge, without plug			
	T			
	U ATEX 2GD, without coil (for coil 23-SP-036)	no		
	V ATEX 2GD, Flame proof enclosures and encapsulated with casting compound	23-SP-045		
	W ATEX 2GD / 3GD, without coil (for coil 23-SP-041 and 23-SP-045)	no		
	X ATEX 3GD, without coil (for coil 23-SP-040 in 230V AC and 115V AC)	no		
	Y ATEX 2GD, without coil (for coil 23-SP-038)	no		
	Z ATEX 2GD / 3GD, without coil (for coil 23-SP-040 in 24V DC and 23-SP-037)	no		

Not all options are suitable for all valve series