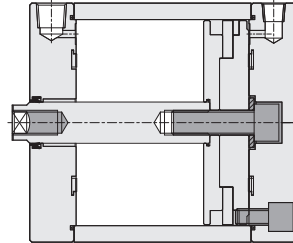


JE series Compact Cylinder

Product features

CHELIC

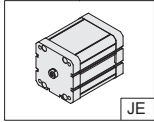
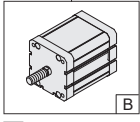
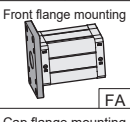
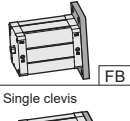
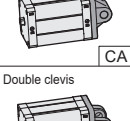
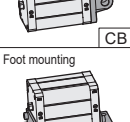
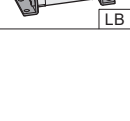
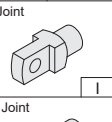
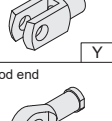
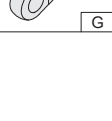
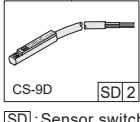
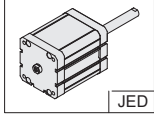
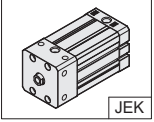
Internal structure



Specification

Item	Bore size (mm)	Ø12	Ø16	Ø20	Ø25	Ø32	Ø40	Ø50	Ø63	Ø80	Ø100
Action		Double acting									
Fluid		Air									
Mounting type		FA, FB, CA, CB, LB									
Pressure range	Kgf/cm ² (kPa)	2 ~ 7 (200 ~ 700)			1.5 ~ 7 (150 ~ 700)			1 ~ 7 (100 ~ 700)			
Ambient and fluid temperature	°C	0 ~ 60									
Piston speed	mm/s	50 ~ 500							50 ~ 350	50 ~ 250	
Material		Aluminum alloy									
Cushion		Rubber washer									
Lubrication		Lubrication free type									
Port size	Rc	M5×0.8p					PT 1/8				
Sensing device		With magnet									
Standard stroke	mm	25, 50, 75, 100, 125, 150, 175, 200, 250, 300, (350, 400, 450, 500)									

Code of order

JE	50	×	100	-	B	-	LB	-	Y	-	SD	2
Model	Bore size		Stroke		Rod end type		Mounting type		Accessory		Sensor switch	
 JE: Standard type	12 - Ø12 mm 16 - Ø16 mm 20 - Ø20 mm 25 - Ø25 mm 32 - Ø32 mm 40 - Ø40 mm 50 - Ø50 mm 63 - Ø63 mm 80 - Ø80 mm 100 - Ø100 mm		Ø12 - 25~100mm Ø16 - 25~100mm Ø20 - 25~100mm Ø25 - 25~100mm Ø32 - 25~500mm Ø40 - 25~500mm Ø50 - 25~500mm Ø63 - 25~500mm Ø80 - 25~500mm Ø100 - 25~500mm		None : Female thread  [B] : Male thread		Front flange mounting  [FA] Cap flange mounting  [FB] Single clevis  [CA] Double clevis  [CB] Foot mounting  [LB]		I Joint  [I] Y Joint  [Y] Rod end  [G]		 [SD] : Sensor switch code (CS-9D) [2] : Number of sensor switch 1 = 1 PCS 2 = 2 PCS	
 JED: Double rod type			The biggest stroke : 500mm									
 JEK: Multiple mounting type												

JE series Compact Cylinder/ Standard Type

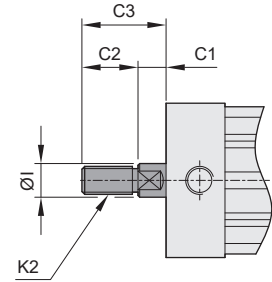
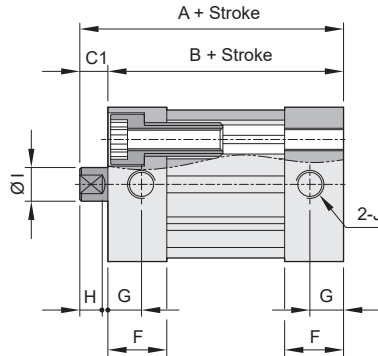
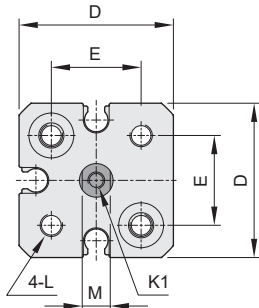
Dimension

CHELIC

JE Ø12 ~ Ø25



Dimension of male thread

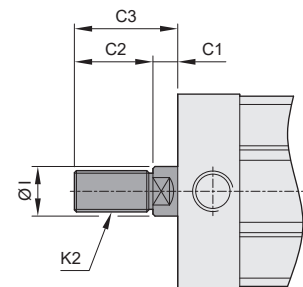
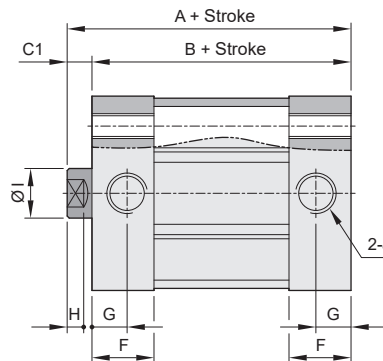
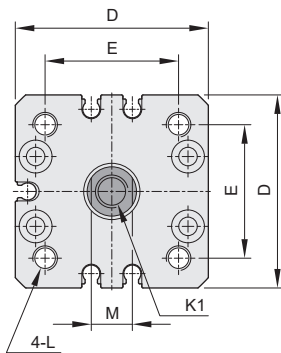


Mark Bore Size	A	B	C1	C2	C3	D	E	F	G	H	I	J	K1	K2	L	M
Ø12	40	35	5	10	15	27.5	16	10.5	6	4	6	M5x0.8P	M3x0.5P	M5x0.8P	M4x0.7P	5
Ø16	40	35	5	12	17	29	18	11	6	4	8	M5x0.8P	M4x0.7P	M6x1.0P	M4x0.7P	7
Ø20	43	37	6	16	22	35.5	22	12	6.5	4	10	M5x0.8P	M6x1.0P	M8x1.25P	M5x0.8P	9
Ø25	45	39	6	16	22	39.5	26	12	6	4	10	M5x0.8P	M6x1.0P	M8x1.25P	M5x0.8P	9

JE Ø32 ~ Ø100



Dimension of male thread



Mark Bore Size	A	B	C1	C2	C3	D	E	F	G	H	I	J	K1	K2	L	M
Ø32	50	44	6	19	25	47	32.5	15	8.5	4	12	PT 1/8"	M8x1.25P	M10x1.25P	M6x1.0P	10
Ø40	51	45	6	19	25	54.5	38	15	8	4	12	PT 1/8"	M8x1.25P	M10x1.25P	M6x1.0P	10
Ø50	53	45	8	22	30	65.5	46.5	15	7.5	6	16	PT 1/8"	M10x1.5P	M12x1.25P	M8x1.25P	14
Ø63	57	49	8	22	30	75.5	56.5	15	7.5	6	16	PT 1/8"	M10x1.5P	M12x1.25P	M8x1.25P	14
Ø80	63	54	9	28	37	95.5	72	16.5	8	7	20	PT 1/8"	M12x1.75P	M16x1.5P	M10x1.5P	17
Ø100	76	67	9	28	37	113.5	89	21.5	10.5	7	20	PT 1/8"	M12x1.75P	M16x1.5P	M10x1.5P	17

NA

NA2

NB

NU

ND

NQ

MSI

JQ

JD

JG

JTD

JTF

JCB

JCF

JE

JM

JED series Compact Cylinder/ Double Rod

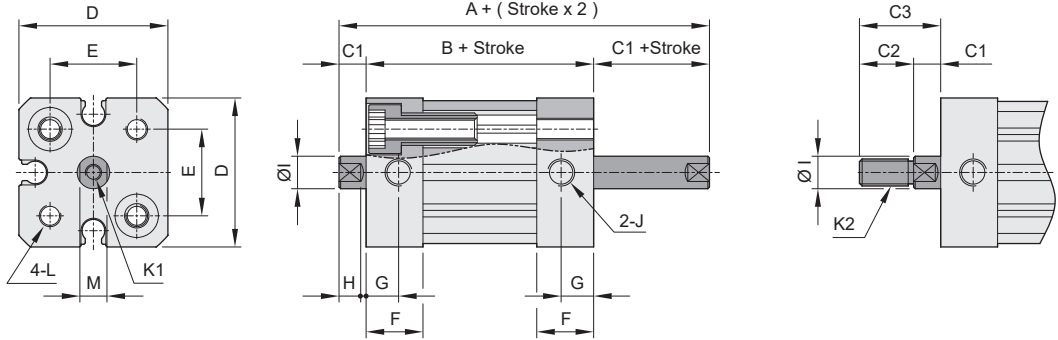
Dimension

CHELIC

◉ JED Ø12 ~ Ø25



◉ Dimension of male thread

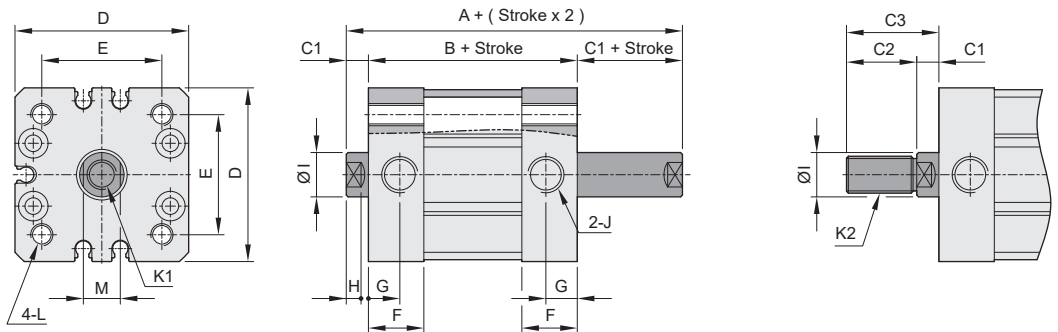


Mark Bore size	A	B	C1	C2	C3	D	E	F	G	H	I	J	K1	K2	L	M
Ø12	45	35	5	10	15	27.5	16	10.5	6	4	6	M5x0.8P	M3x0.5P	M5x0.8P	M4x0.7P	5
Ø16	45	35	5	12	17	29	18	11	6	4	8	M5x0.8P	M4x0.7P	M6x1.0P	M4x0.7P	7
Ø20	49	37	6	16	22	35.5	22	12	6	4	10	M5x0.8P	M6x1.0P	M8x1.25P	M5x0.8P	9
Ø25	51	39	6	16	22	39.5	26	12	6	4	10	M5x0.8P	M6x1.0P	M8x1.25P	M5x0.8P	9

◉ JED Ø32 ~ Ø100



◉ Dimension of male thread



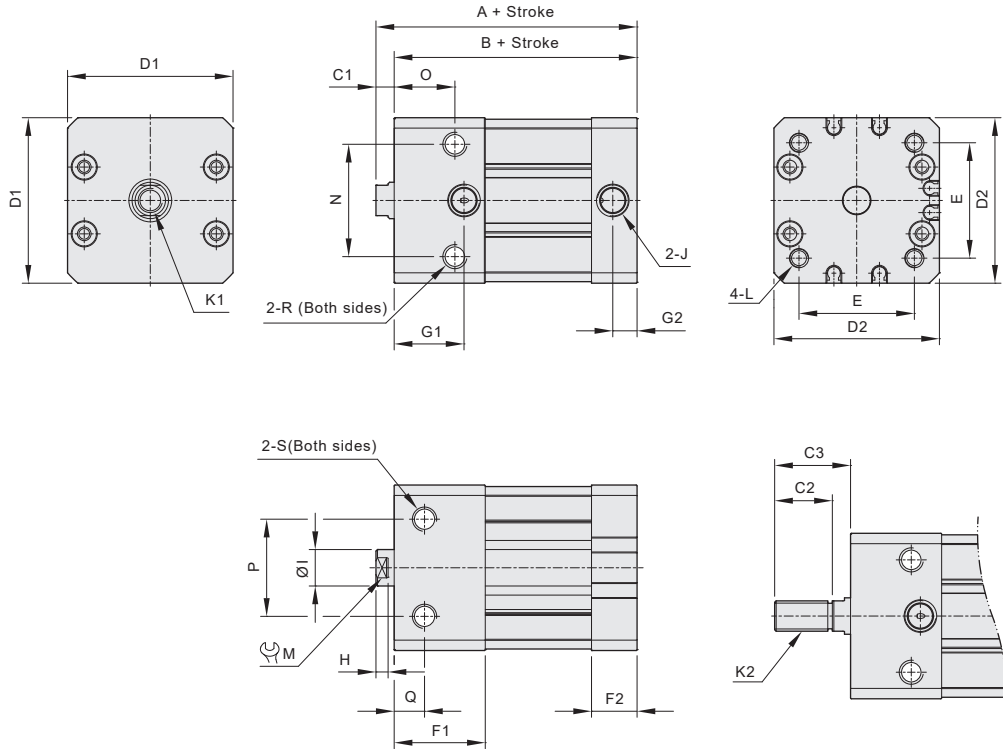
Mark Bore size	A	B	C1	C2	C3	D	E	F	G	H	I	J	K1	K2	L	M
Ø32	56	44	6	19	25	47	32.5	15	8.5	4	12	PT 1/8"	M8x1.25P	M10x1.25P	M6x1.0P	10
Ø40	57	45	6	19	25	54.5	38	15	8	4	12	PT 1/8"	M8x1.25P	M10x1.25P	M6x1.0P	10
Ø50	61	45	8	22	30	65.5	46.5	15	7.5	6	16	PT 1/8"	M10x1.5P	M12x1.25P	M8x1.25P	14
Ø63	65	49	8	22	30	75.5	56.5	15	7.5	6	16	PT 1/8"	M10x1.5P	M12x1.25P	M8x1.25P	14
Ø80	72	54	9	28	37	95.5	72	16.5	8	7	20	PT 1/8"	M12x1.75P	M16x1.5P	M10x1.5P	17
Ø100	85	67	9	28	37	113.5	89	21.5	10.5	7	20	PT 1/8"	M12x1.75P	M16x1.5P	M10x1.5P	17

JEK series Compact Cylinder/ Side-mounted

Dimension

CHELIC

☉ JEK Ø32 ~ Ø100



Bore size	Mark	A	B	C1	C2	C3	D1	D2	E	F1	F2	G1	G2	H	I	J	K1
32		65	59	6	19	25	48	47	32.5	30	15	21.5	8.5	4	12	PT 1/8	M8x1.25
40		66	60	6	19	25	55.5	54.5	38	30	15	23	8	4	12	PT 1/8	M8x1.25
50		68	60	8	22	30	66.5	65.5	46.5	30	15	22.5	7.5	6	16	PT 1/8	M10x1.5
63		72	64	8	22	30	76.5	75.5	56.5	30	15	22.5	7.5	6	16	PT 1/8	M10x1.5
80		80.5	71.5	9	28	37	96.5	95.5	72	34	16.5	25.5	8	7	20	PT 1/8	M12x1.75
100		94.5	85.5	9	28	37	114.5	113.5	89	40	21.5	29.5	10.5	7	20	PT 1/8	M12x1.75

Bore size	Mark	K2	L	M	N	O	P	Q	R	S
32		M10x1.25	M6x1.0	10	35	20	25	10	Ø5.1 Thru-hole, M6x1.0Px15dp	Ø5.1 Thru-hole, M6x1.0Px15dp
40		M10x1.25	M6x1.0	10	37	20	32	10	Ø6.8 Thru-hole, M8x1.25Px20dp	Ø6.8 Thru-hole, M8x1.25Px20dp
50		M12x1.25	M8x1.25	14	45	20	35	10	Ø6.8 Thru-hole, M8x1.25Px20dp	Ø6.8 Thru-hole, M8x1.25Px20dp
63		M12x1.25	M8x1.25	14	55	20	50	10	Ø6.8 Thru-hole, M8x1.25Px20dp	Ø6.8 Thru-hole, M8x1.25Px20dp
80		M16x1.5	M10x1.5	17	68	22	55	10	Ø8.5 Thru-hole, M10x1.5Px25dp	Ø8.5 Thru-hole, M10x1.5Px25dp
100		M16x1.5	M10x1.5	17	85	26	75	14	Ø8.5 Thru-hole, M10x1.5Px25dp	Ø8.5 Thru-hole, M10x1.5Px25dp

NA

NA2

NB

NU

ND

NQ

MSI

JQ

JD

JG

JTD

JTF

JCB

JCF

JE

JM

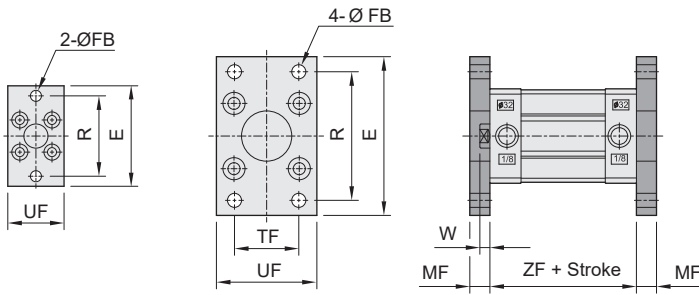
JE series Compact Cylinder

Dimension-Accessory

CHELIC

Flange mounting type – FA Front flange mounting type FB End flange mounting type

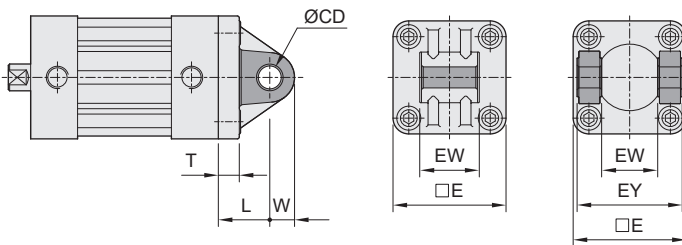
■ $\varnothing 12 \sim \varnothing 25$ ■ $\varnothing 32 \sim \varnothing 100$ ● FA type ● FB type



Mark Bore size	E	UF	R	TF	FB	MF	W	ZF
$\varnothing 32$	79	50	64	32	7	10	6	44
$\varnothing 40$	90	55	72	36	9	10	6	45
$\varnothing 50$	110	65	90	45	9	12	8	45
$\varnothing 63$	120	75	100	50	9	12	8	49
$\varnothing 80$	153	95	126	63	12	16	9	54
$\varnothing 100$	178	115	150	75	14	16	9	67

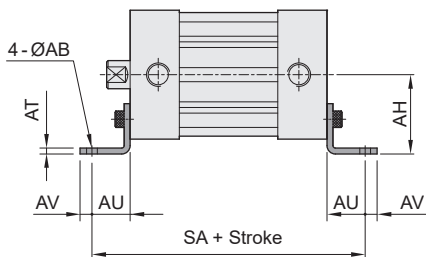
Central trunnion type – CA Male clevis type CB Female clevis type

■ $\varnothing 12 \sim \varnothing 25$ ■ $\varnothing 32 \sim \varnothing 100$ ● CA type ● CB type



Mark Bore size	CD	T	L	W	EW	E	EY
$\varnothing 32$	10	10	22	10.5	26	47	45
$\varnothing 40$	12	10	25	11	28	53	52
$\varnothing 50$	12	11	27	12	32	65	60
$\varnothing 63$	16	11	32	15	40	75	70
$\varnothing 80$	16	15	36	17	50	95	90
$\varnothing 100$	20	15	41	21	60	115	110

Foot mounting type – LB



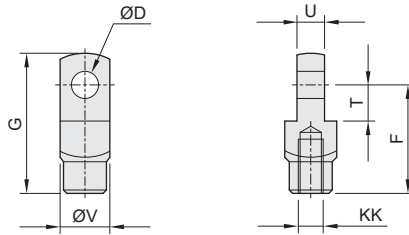
Mark Bore size	AB	AT	AV	AU	AH	TR	UH	SA
$\varnothing 32$	7	4	7	16	33.5	32	47	76
$\varnothing 40$	9	4	7	18	38	36	54	81
$\varnothing 50$	9	5	8	21	45	45	65	87
$\varnothing 63$	9	5	8	21	50	50	75	91
$\varnothing 80$	12	6	10	26	63	63	95	106
$\varnothing 100$	14	6	12	27	74	75	113	121

JE series Compact Cylinder

Dimension-Accessory

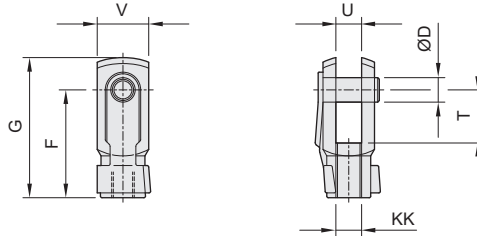
CHELIC

I connector



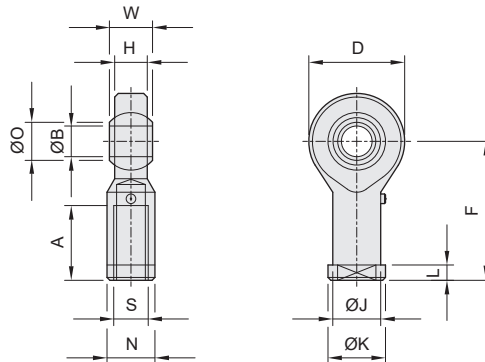
Model	Bore size	D	F	G	KK	T	U	V
I - M5 × 0.8	Ø12	5	25	32	M5 × 0.8	14	6.4	12
I - M6 × 1.0	Ø16	6	24	31	M6 × 1.0	9	6	12.7
I - M8 × 1.25	Ø20, Ø25	8	32	42	M8 × 1.25	11	8	16
I - M10 × 1.25	Ø32, Ø40	10	40	52	M10 × 1.25	13	10	19
IN - M12 × 1.25	Ø50, Ø63	12	56	70	M12 × 1.25	20	20	24
IN - M16 × 1.5	Ø80, Ø100	16	56	70	M16 × 1.5	20	20	32

Y connector (with pin)



Model	Bore size	D	F	G	KK	T	U	V
Y - M5 × 0.8	Ø12	5	21	28	M5 × 0.8	10	6.5	12
Y - M6 × 1.0	Ø16	6	24	31	M6 × 1.0	12	6	12.7
YN - M8 × 1.25	Ø20, Ø25	8	32	42	M8 × 1.25	16	8	16
YN - M10 × 1.25	Ø32, Ø40	10	40	52	M10 × 1.25	20	10	20
YN - M12 × 1.25	Ø50, Ø63	12	48	62	M12 × 1.25	24	12	24
YN - M16 × 1.5	Ø80, Ø100	16	64	83	M16 × 1.5	32	16	32

Rod eye clevis



Model	Bore size	S	A	B	O	H	W	F	D	J	K	L	N	Load S _{load} (KN)	Weight W (g)
PHS - 5	Ø12	M5 × 0.8	12	5	7.7	6	8	27	16	9	11	4	9	5	18
PHS - 6	Ø16	M6 × 1.0	14	6	8.9	7	9	30	18	10	13	5	11	7	27
PHS - 8	Ø20, Ø25	M8 × 1.25	17	8	10.4	9	12	36	22	13	16	5	14	11	46
PHS - 10F	Ø32, Ø40	M10 × 1.25	21	10	12.9	11	14	43	26	15	19	6.5	17	14	78
PHS - 12F	Ø50, Ø63	M12 × 1.25	24	12	15.4	12	16	50	30	18	22	6.5	19	17	115
PHS - 16F	Ø80, Ø100	M16 × 1.5	33	16	19.3	15	21	64	38	22	27	8	22	28	230

NA

NA2

NB

NU

ND

NQ

MSI

JQ

JD

JG

JTD

JTF

JCB

JCF

JE

JM