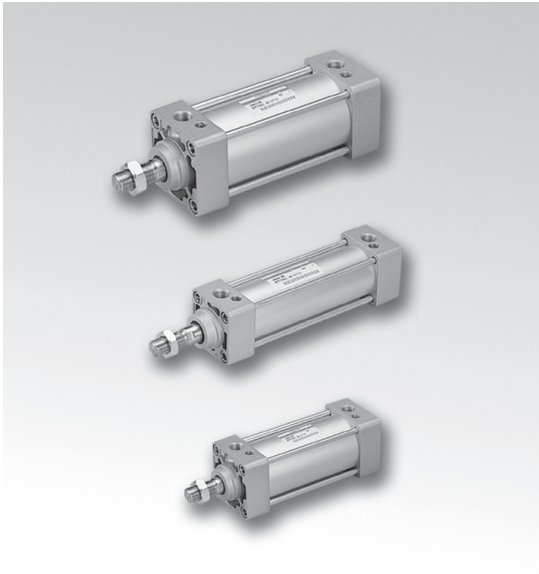


Actuator Unit – DMB2 series

Standard cylinder

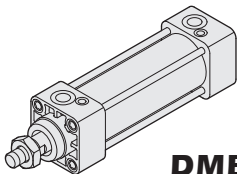
CHELIC



DMB2 series
Provide CAD external dimension.

This product:

Applicable to stroke within 500mm



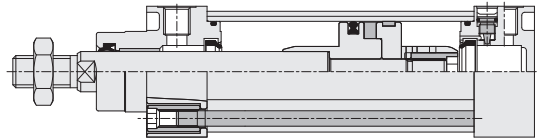
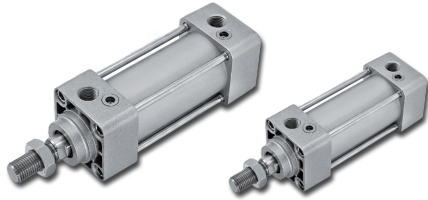
DMB2 series ----- Standard cylinder ----- $\varnothing 32 \sim \varnothing 100$ ----- P.6-6.10

DMB2 series Air Cylinder (One piston packing)

Product features

CHELIC

Internal structure



Specification

Item	Bore size (mm)	Ø32	Ø40	Ø50	Ø63	Ø80	Ø100
Action		Double acting					
Fluid		Air					
Mounting type		FA, FB, CA, CB, LB, TC					
Pressure range	Kgf/cm ² (kPa)	1.5 ~ 9 (150 ~ 900)					
Ambient and fluid temperature	°C	0 ~ 60					
Piston speed	mm/s	50 ~ 700					
Material		Aluminum alloy					
Cushion		Adjustable air cushion					
Lubrication		Lubrication free					
Port size		PT 1/8	PT 1/4		PT 3/8		PT 1/2
Sensing device		With magnet					
Standard stroke	mm	50, 75, 100, 125, 150, 175, 200, 250, 300, 350, 400, 450, 500, (600, 700)					

Code of order

Model	Bore size	Stroke	Mounting type	Accessory	Sensor switch	Sensor bracket	Sensor switch q'ty
DMB2 Standard cylinder	32 - Ø32 mm 40 - Ø40 mm 50 - Ø50 mm 63 - Ø63 mm 80 - Ø80 mm 100 - Ø100 mm	Ø32 -50 ~ 500mm Ø40 -50 ~ 500mm Ø50 -50 ~ 600mm Ø63 -50 ~ 600mm Ø80 -50 ~ 700mm Ø100-50 ~ 700mm	FA FB CA CB LB TC	I connector Rod clevis Rod end	CS-9D (Magnetic type) CS-9B (Magnetic type) CS-8G (Solid state) CS-8B (Solid state)	50U	1 = 1 PCS 2 = 2 PCS
DMB2D Double rod							

※ If it is not standard stroke, Please contact sales representative.

FA: Front flange
FB: End flange
CA: Single clevis
CB: Double clevis
LB: Axial foot
TC: Central trunnion

Sensor switch mark:
 : None
 (without Sensor switch)
 9D: CS-9D
 9B: CS-9B
 8G: CS-8G
 8B: CS-8B

None: without sensor bracket
 32U: Applicable to Ø32, Ø40
 50U: Applicable to Ø50, Ø63
 80U: Applicable to Ø80, Ø100

DN

DMB

DU

DNK

DNE

DCK2

DQ

DCQ

DMB2 series Air Cylinder (One piston packing)

Dimensions

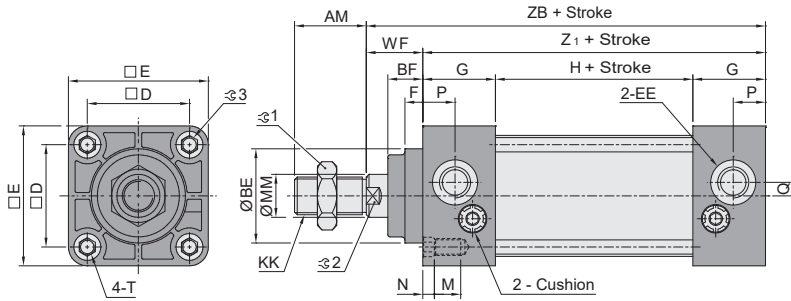
CHELIC

Standard type



DMB2 □ × □ ST

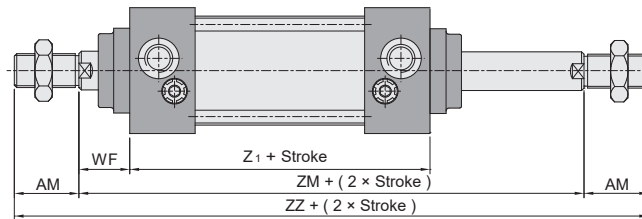
● Ø32 ~ Ø100



Double rod – DMBD



DMBD □ × □ ST



Unit: mm

Bore size \ Mark	AM	BE	BF	D	E	EE	F	G	H	KK	M	MM
Ø32	22	30	13	32.5	47	G 1/8	4.6	27	30	M10×1.25	9	12
Ø40	30	35	13	38	52	G 1/4	5	27	30	M14×1.5	9	16
Ø50	35	40	14	46.5	65	G 1/4	6.6	31.5	31	M18×1.5	10	20
Ø63	35	45	14	56.5	75	G 3/8	6.5	31.5	31	M18×1.5	10	20
Ø80	40	45	20	72	95	G 3/8	8.5	38	38	M22×1.5	11	25
Ø100	40	55	20	89	114	G 1/2	9	38	38	M26×1.5	11	30

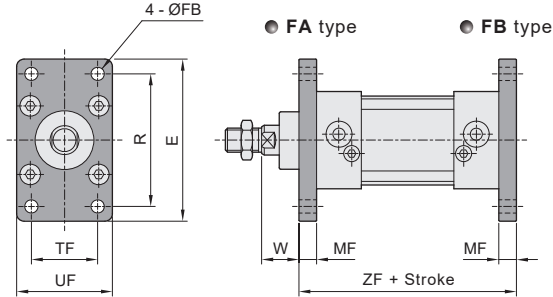
Bore size \ Mark	N	P	Q	T	WF	Z1	ZB	ZM	ZZ	±1	±2	±3
Ø32	4	13	5	M6×1	25	84	109	134	178	16	10	6
Ø40	4	14	5	M6×1	21	84	105	126	186	22	14	6
Ø50	5	16	5	M8×1.25	23	94	117	140	210	26	18	8
Ø63	5	17	9	M8×1.25	23	94	117	140	210	26	18	8
Ø80	5	19	11.5	M10×1.5	32	114	146	178	258	32	22	10
Ø100	5	19	17	M10×1.5	32	114	146	178	258	34	26	10

DMB2 series Air Cylinder (One piston packing)

Bracket dimensions

CHELIC

- Flange – FA Front flange
 FB End flange



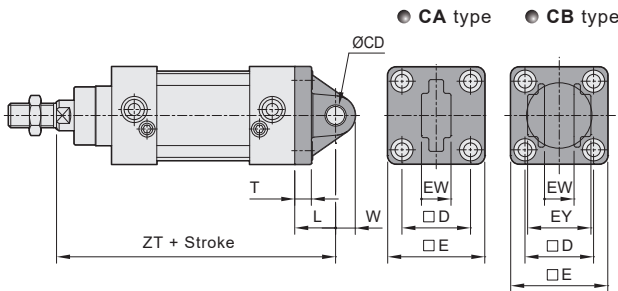
Mark Bore size (mm)	Mark							
	E	FB	MF	R	TF	UF	W	ZF
Ø32	79	7	10	64	32	50	15	104
Ø40	90	9	10	72	36	55	11	108
Ø50	110	9	12	90	45	65	11	118
Ø63	120	9	12	100	50	75	11	118
Ø80	153	14	16	126	63	95	16	146
Ø100	178	14	16	150	75	115	16	146

DN

DMB

DU

- Clevis – CA Single clevis
 CB Double clevis



Mark Bore size (mm)	Mark								
	CD	D	E	EW	EY	L	T	W	ZT
Ø32	10	32.5	46	14	28	23	10	10.5	132
Ø40	10	38	52	14	28	23	10	11	128
Ø50	14	46.5	65	20	40	30	13	15	147
Ø63	14	56.5	75	20	40	30	13	15	147
Ø80	22	72	95	30	60	42	16	23	188
Ø100	22	89	114	30	60	42	16	23	188

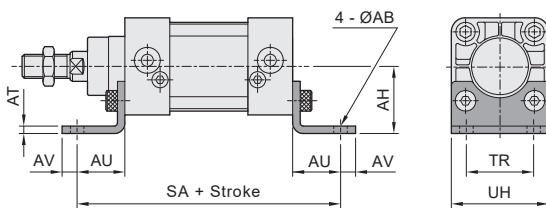
DNK

DNE

DCK2

DQ

- Axial foot – LB



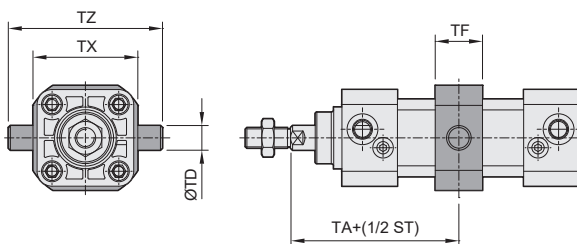
Mark Bore size (mm)	Mark							
	AB	AH	AT	AU	AV	SA	TR	UH
Ø32	7	30	3	22	8	128	32	47
Ø40	9	33	3	24	11	132	38	55
Ø50	9	40	3	27	11	148	46	65
Ø63	12	45	3.5	27	14	148	56	75
Ø80	12	55	5.8	30	14	174	72	95
Ø100	14	65	5.8	32	16	178	89	115

DCK2

DQ

DCQ

- Central trunnion type – TC



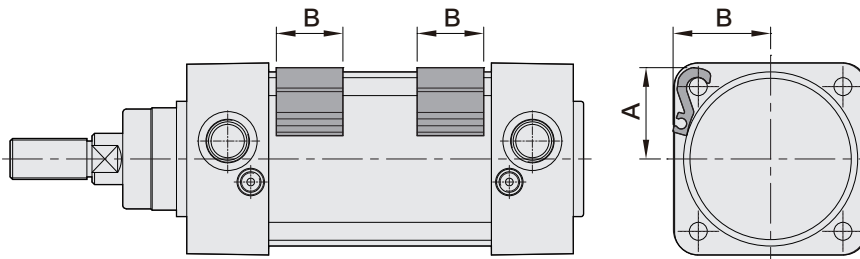
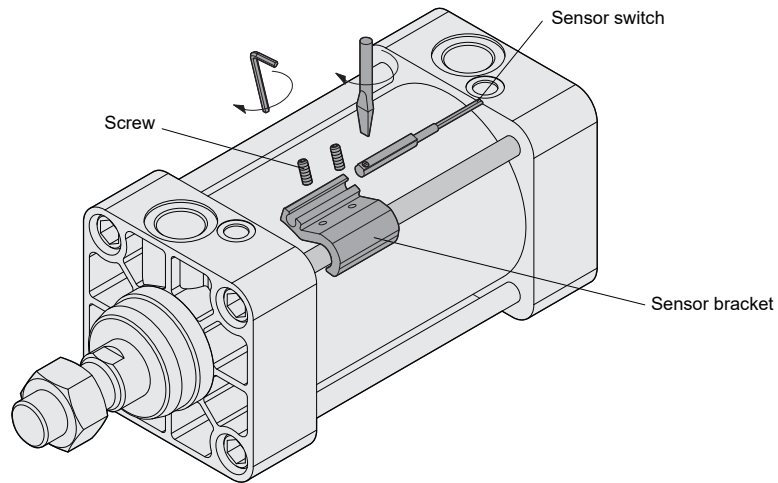
Mark Bore size (mm)	Mark				
	TA	ØTD	TF	TX	TZ
Ø32	67	Ø12	23	50	74
Ø40	63	Ø16	20	63	95
Ø50	70	Ø16	22	75	107
Ø63	70	Ø20	28	90	130
Ø80	89	Ø20	34	110	150
Ø100	89	Ø25	34	132	182

DMB2 series Air Cylinder (One piston packing)

Mounting type of sensor switch

CHELIC

◉ Sensor switch mounting type



◉ Sensor switch bracket dimension

Unit: mm

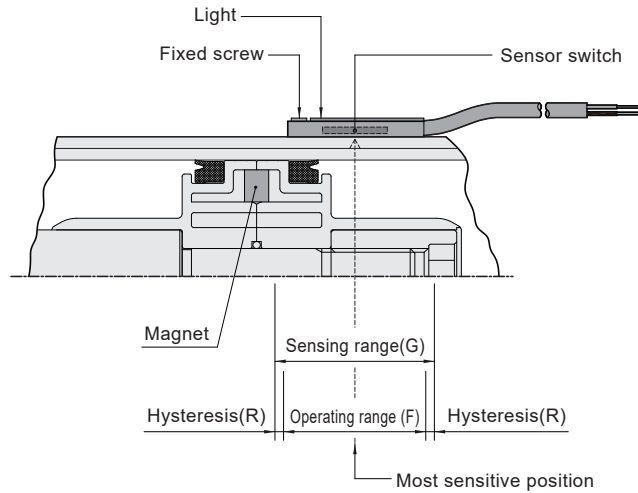
Bore size	32	40	50	63	80	100
A	22.5	25.4	30.5	35.6	44.5	53
B	24	27.8	32.5	38	46.9	54.5
C	26	26	26	26	26	26

DMB2 series Air Cylinder (One piston packing)

Sensor switch operating range and the setting

CHELIC

◉ Sensor switch setting and operating range



DN

DMB

DU

DNK

DNE

◉ Sensing range

Sensor switch is fixed on the cylinder body. The magnetic piston head will activate the sensor switch when it enters the operating range. It has 0.5mm differential.

◉ Operating range

When piston head moves the switch setting and adjustment will be based on the responding range generated by the magnetic field and the switch. (Please refer to the right table)

Unit: mm

Model	CS-9D(B)	
Bore size	Operating range (F)	Hysteresis (R)
32	6	2 ~ 3
40	8	2 ~ 3
50	9	3 ~ 3
63	10	2 ~ 3
80	13	2 ~ 3
100	14	2 ~ 3

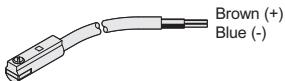
DCK2

DQ

DCQ

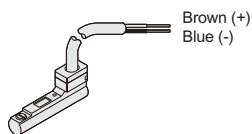
◉ Sensor switch introduction

● CS-8G

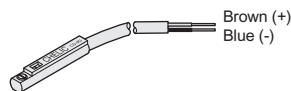


Voltage: DC 5~30V

● CS-8B

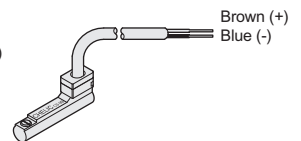


● CS-9D



Voltage: DC 5~120V
AC 5~120V

● CS-9B



DMB2 series Air Cylinder (One piston packing)

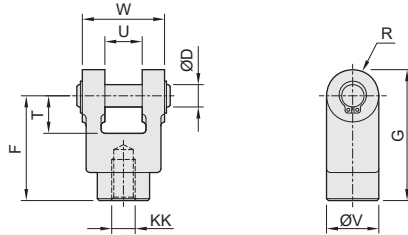
Dimensions-Accessory

CHELIC

◉ Rod clevis (With pin)

● DMB2 (YB) series

Suitable for $\varnothing 32 \sim \varnothing 100$

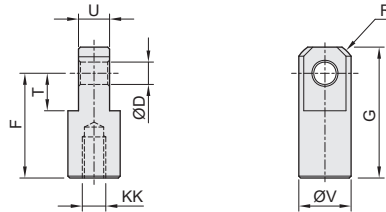


Model	Bore size	D	F	G	KK	R	T	U	V	W
YB - M10 × 1.25	Ø32	10	30	40	M10 × 1.25	10	16	14	20	28
YB - M14 × 1.5	Ø40	10	40	51	M14 × 1.5	11	19	14	22	28
YB - M18 × 1.5	Ø50, Ø63	14	50	64	M18 × 1.5	14	24	20	28	40
YB - M22 × 1.5	Ø80	22	65	85	M22 × 1.5	20	34	30	40	60
YB - M26 × 1.5	Ø100	22	65	85	M26 × 1.5	20	34	30	40	60

◉ I connector

● DMB2 (IB) series

Suitable for $\varnothing 32 \sim \varnothing 100$

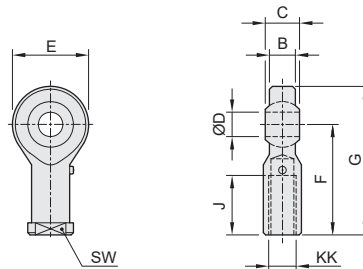


Model	Bore size	D	F	G	KK	R	T	U	V
IB - M10 × 1.25	Ø32	10	30	40	M10 × 1.25	12	16	14	20
IB - M14 × 1.5	Ø40	10	40	50	M14 × 1.5	12.5	19	14	22
IB - M18 × 1.5	Ø50, Ø63	14	50	64	M18 × 1.5	16.5	24	20	28
IB - M22 × 1.5	Ø80	22	60	80	M22 × 1.5	23.5	34	30	40
IB - M26 × 1.5	Ø100	22	60	80	M26 × 1.5	23.5	34	30	40

◉ Rod end

● DMB2 (GB) series

Suitable for $\varnothing 32 \sim \varnothing 100$



Model	Bore size	B	C	D	E	F	G	J	KK	SW
GB - M10 × 1.25	Ø32	10.5	14	10	26	43	56	21	M10 × 1.25	17
GB - M14 × 1.5	Ø40	13.5	19	14	34	57	74	24	M14 × 1.5	21
GB - M18 × 1.5	Ø50, Ø63	17	23	18	42	71	92	36	M18 × 1.5	27
GB - M22 × 1.5	Ø80	20	28	22	50	84	109	43	M22 × 1.5	32
GB - M26 × 1.5	Ø100	22	31	25	60	94	124	36	M26 × 1.5	42