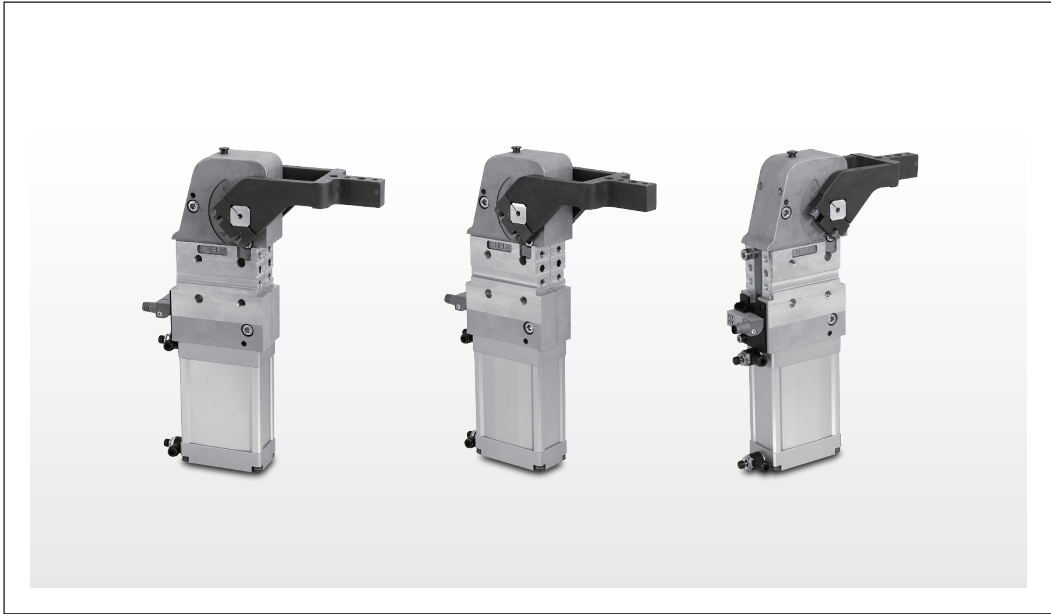


Actuator Unit – DQ series

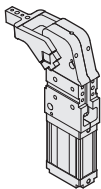
Power Clamp cylinder

CHELIC



Feature:

1. Applicable to clamp metal chip plate for the welding working procedure.
2. Four side mounting directions.
3. The clamp arm can be in locking status when air supply stop.



DQ series ----- Power Clamp cylinder ----- Ø40 ~ Ø63 ----- P.6-6.55

DN

DMB

DU

DNK

DNE

DCK2

DQ

DCQ

DQ Series Power Clamp Cylinder

Product features

CHELIC

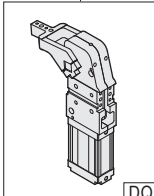
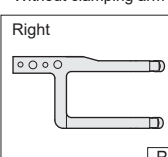
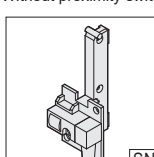
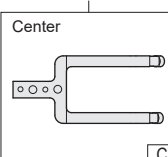
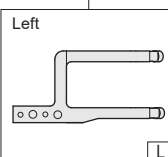
Internal structure



Specification

Item	Bore size (mm)	40	50	63
Action		Double acting		
Fluid		Air		
Pressure range	Kgf/cm ² (kPa)	1.5 ~ 6 (150 ~ 600)		
Max. operating pressure	Kgf/cm ² (kPa)	6.5 (650)		
Ambient and fluid temperature	°C	0 ~ 60		
Piston speed	mm/s	50 ~ 500		
Lubrication		Lubrication free type		
Port size		PT/ NPT		
Cushion		Air cushioning in return position		

Code of order

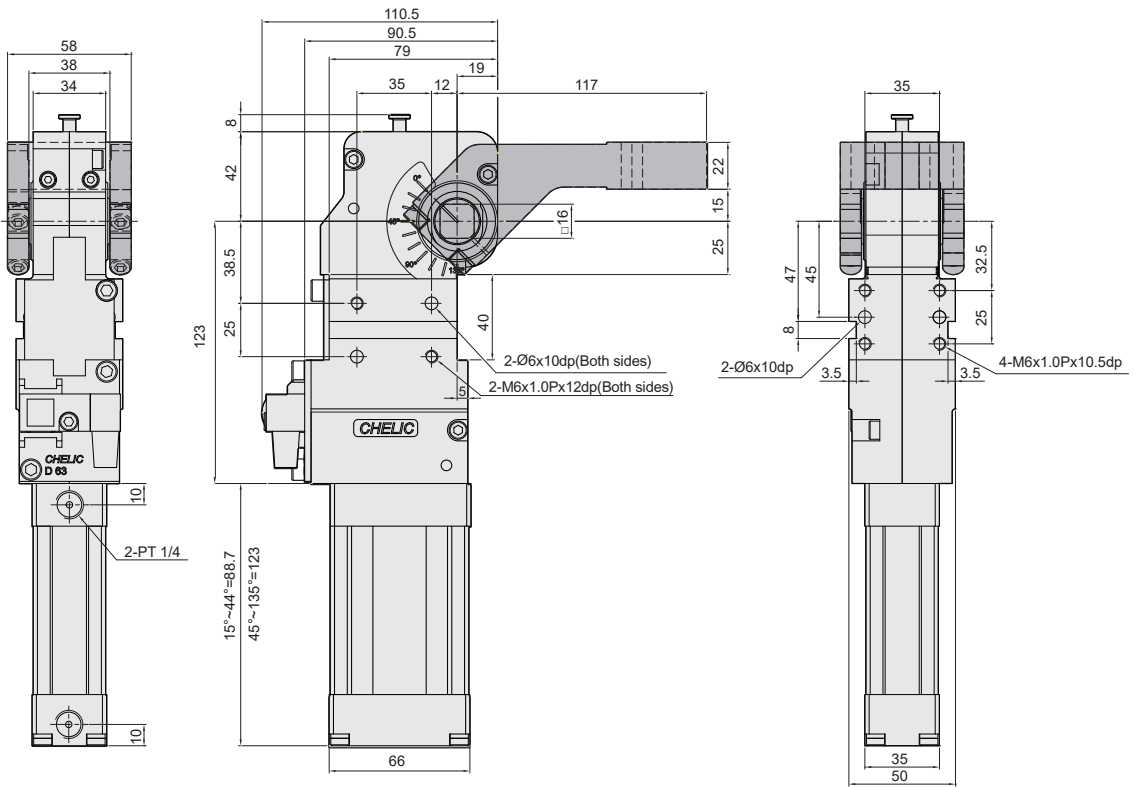
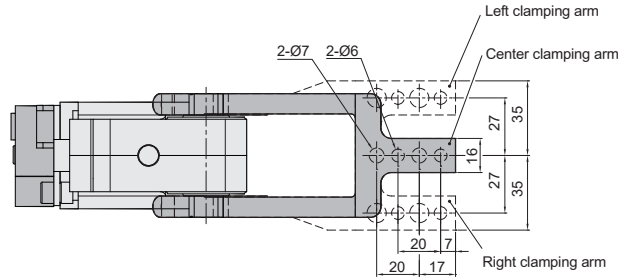
DQ	40	N	90	R	SN
Model	Bore size	Thread type	Arm opening angle	Arm mounting	With proximity
	40 — Ø40mm 50 — Ø50mm 63 — Ø63mm	None — PT N — NPT	30 — 30° 45 — 45° 60 — 60° 75 — 75° 90 — 90° 105 — 105° 120 — 120° 135 — 135°	None - Without clamping arm Right Center Left	None - Without proximity switch SN SN - with proximity sensor NPN SP - with proximity sensor PNP
					
					
					

DQ Series Power Clamp Cylinder

Dimensions

CHELIC

► DQ Ø40



DN

DMB

DU

DNK

DNE

DCQ2

DQ

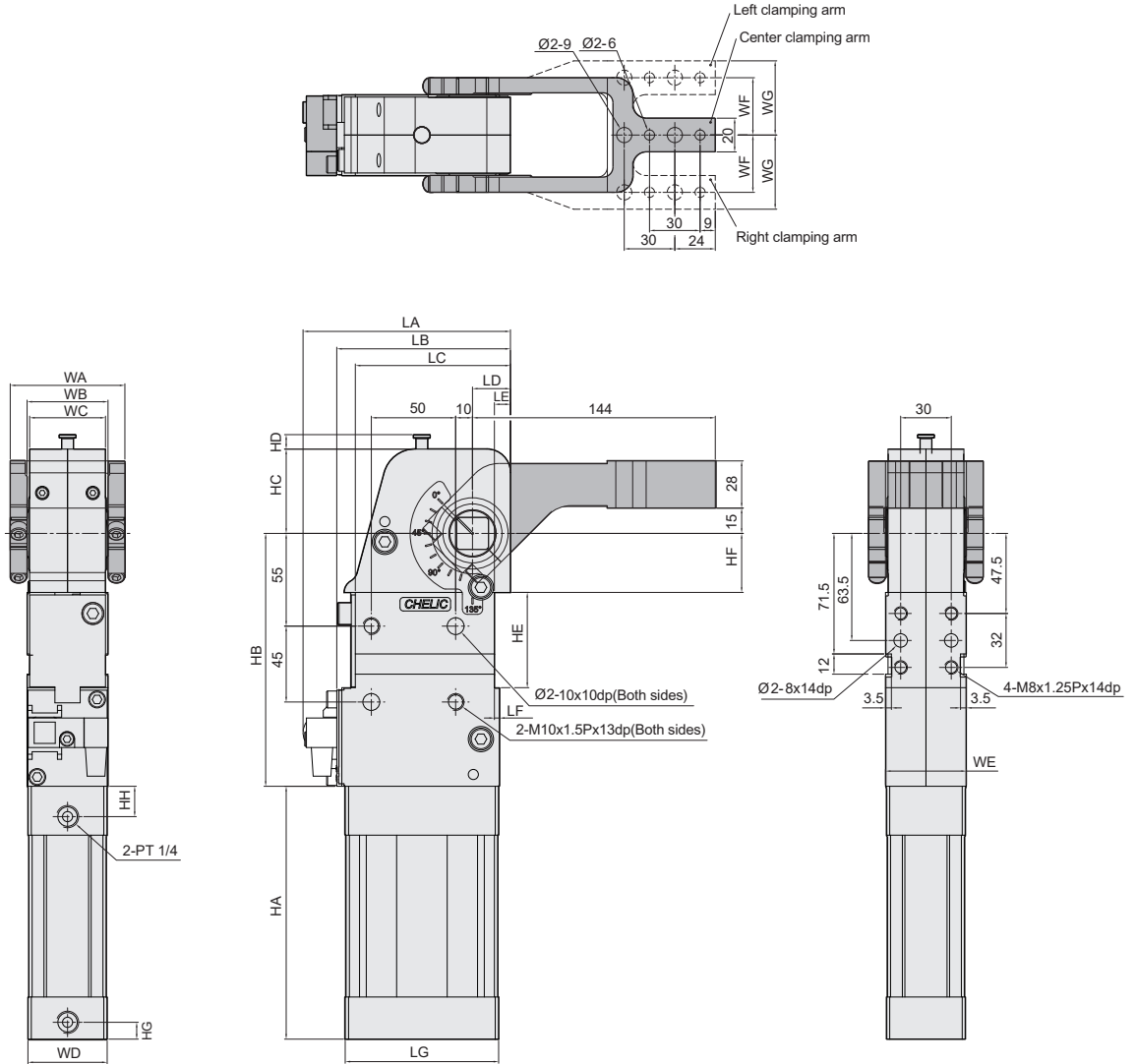
DCQ

DQ Series Power Clamp Cylinder

Dimensions

CHELIC

► DQ Ø50, Ø63



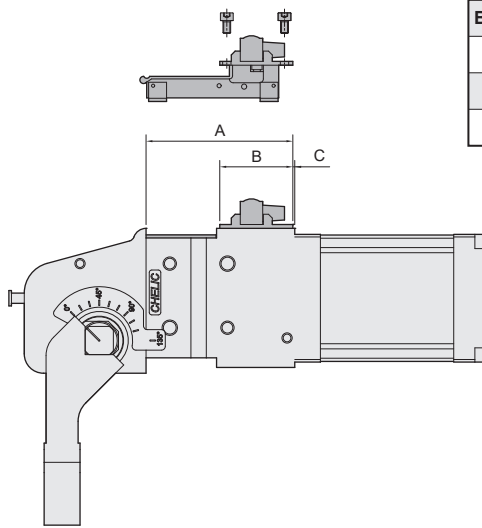
Bore size (mm)	HA		HB	HC	HD	HE	HF	HG	HH	LA	LB	LC	LD	LE	LF	LG	WA	WB	WC	WD	WE	WF	WG
	15°~44°	45°~135°																					
50	107	150	150	50	8.6	56.5	35	10	18	123	103	92	22.5	9.5	91	3	68	48	45	47	48	34	44
63	100.7	148	152.5	58.5	12	55	36.5	9	9	136	116	105.5	25.5	12	99.6	7.5	79	53	51	53.6	54	37	47

DQ Series Power Clamp Cylinder

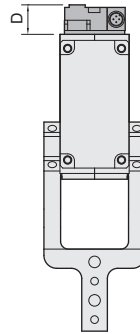
Mounting type and operation of sensor switch

CHELIC

Sensor switch mounting type



Bore size	Mark(mm)	A	B	C	D
DQ 40		97	57	1	23
DQ 50		115	57	0	23
DQ 63		114.5	57	1.5	23



DN

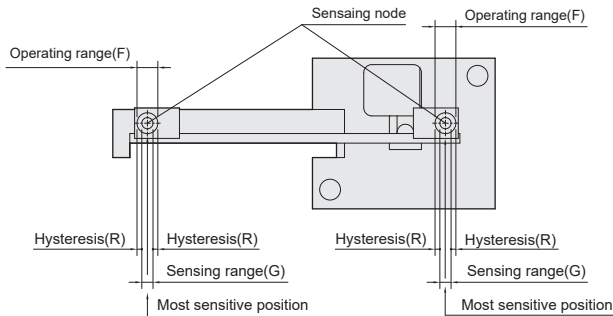
DMB

DU

DNK

DNE

Sensor switch setting and operating range

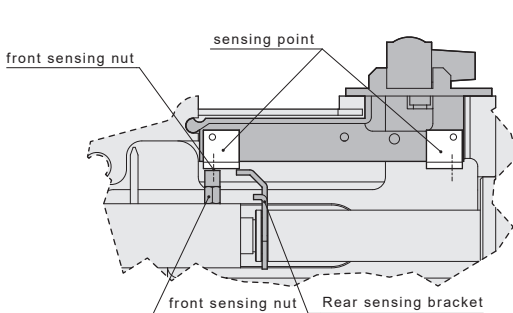


Model	IPSRB-N02PY-D4YV1		
Bore size	G	R	F
DQ series	3.5	1.5	6.5

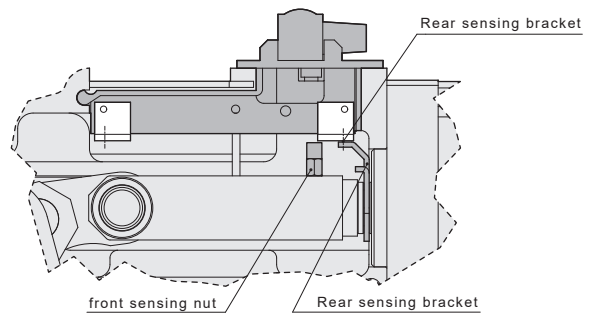
DCK2

DQ

DCQ



(Piston in front)



(Piston in back)

● Sensing range:

Sensor switch is fixed on the cylinder body. When piston moves, sensor screw and bracket are touching sensing point when it enters the operating range.

● Operating range:

When piston head moves the switch setting and adjustment will be based on the responding range generated by the magnetic field and the switch.