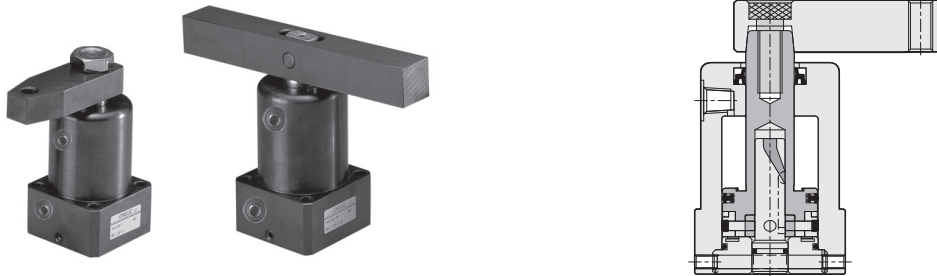


HUR(L) series Directional Rotary Clamp Cylinder

Product features/ Code of order

CHELIC

Internal structure



Specification

Item	Bore size (mm)	Ø25	Ø32	Ø40	Ø50	Ø63
Action		Double acting				
Fluid		Clean oil (ISO - VG 68)				
Max. operating pressure	kgf/cm ² (kPa)	100 (10000)				
Pressure range	kgf/cm ² (kPa)	5 ~ 70 (500 ~ 7000)				
Rotary stroke	mm	9	11		13	
Under pressure stroke	mm	13	15		17	
Body material		Carbon steel				
Rotation angle	°	90 ± 2				
Rotation direction		Left (From right to left) - L; Right (From left to right) - R				

Product weight

Unit: kg

Stroke size	Ø25	Ø32	Ø40	Ø50	Ø63
Weight	1.3	1.7	2	3.2	5.1

Code of order

<div style="border: 1px solid black; border-radius: 10px; padding: 2px; width: 40px; margin: 0 auto;">HU</div> <div style="border: 1px solid black; border-radius: 10px; padding: 2px; width: 40px; margin: 0 auto;">R</div> <div style="border: 1px solid black; border-radius: 10px; padding: 2px; width: 100px; margin: 0 auto;">Model</div>	<div style="border: 1px solid black; border-radius: 10px; padding: 2px; width: 100px; margin: 0 auto;">MF</div> <div style="border: 1px solid black; border-radius: 10px; padding: 2px; width: 100px; margin: 0 auto;">Circuit type</div>	<div style="border: 1px solid black; border-radius: 10px; padding: 2px; width: 40px; margin: 0 auto;">25</div> <div style="border: 1px solid black; border-radius: 10px; padding: 2px; width: 100px; margin: 0 auto;">Bore size</div>	<div style="border: 1px solid black; border-radius: 10px; padding: 2px; width: 40px; margin: 0 auto;">13</div> <div style="border: 1px solid black; border-radius: 10px; padding: 2px; width: 100px; margin: 0 auto;">Stroke</div>	<div style="border: 1px solid black; border-radius: 10px; padding: 2px; width: 40px; margin: 0 auto;">D</div> <div style="border: 1px solid black; border-radius: 10px; padding: 2px; width: 100px; margin: 0 auto;">Clamp type</div>
<p>L: Left rotation type (from right to left)</p>	<p>None : Standard</p>	<p>25 - Ø25 mm 32 - Ø32 mm 40 - Ø40 mm 50 - Ø50 mm 63 - Ø63 mm</p>	<p>Press stroke (Not include rotation stroke)</p> <p>Ø25 - 13 mm Ø32 - 15 mm Ø40 - 15 mm Ø50 - 17 mm Ø63 - 17 mm</p>	<p>None: Unilateral</p>
<p>R: Right rotation type (from right to left)</p>	<p>MC: Manifold block with speed control type</p>			<p>D: Bilateral</p>

※ 90° is standard rotate angle

※ 0°, 45°, 60° is made-to-order

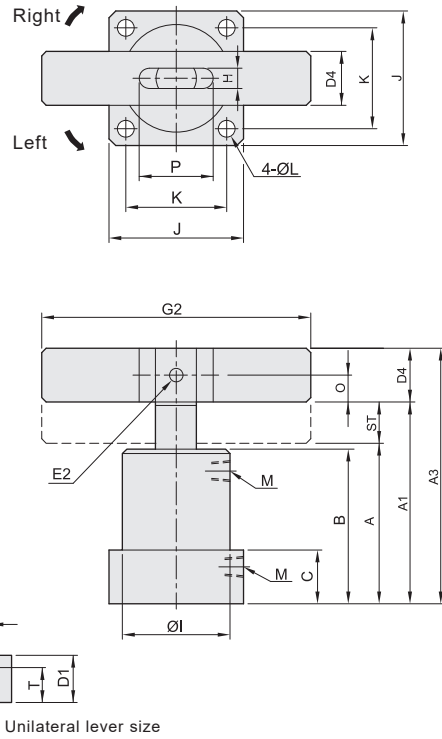
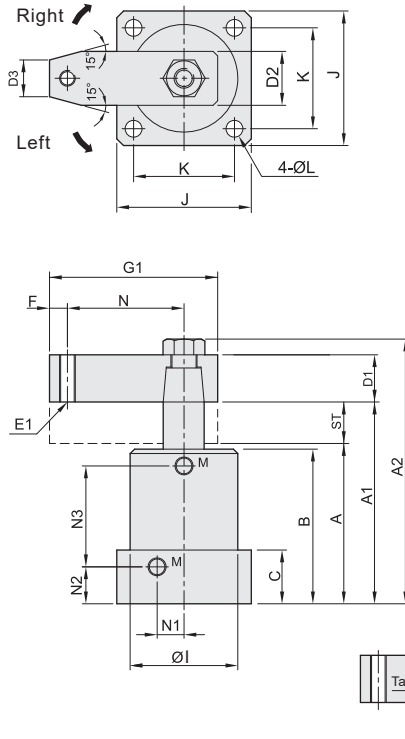
HUR(L) series Directional Rotary Clamp Cylinder

Dimension

CHELIC

● HUR(L) Ø25 ~ Ø63

□ Double clamp



Bore size	Stroke (mm)	Rotary stroke (mm)	Clamp stroke (mm)	Pressure area pressure side pull side mm ²	Theoretical clamp force(N) (3.5MPa)	Clamp length	
						G1	G2
Ø25	Ø18	9	13	491 / 237	830	74	140
Ø32	Ø20	11	15	804 / 490	1720	81	160
Ø40	Ø22.4	11	15	1257 / 863	3020	86	160
Ø50	Ø28	13	17	1963 / 1347	4710	96	180
Ø63	Ø35	13	17	3117 / 2155	7540	114	200

Bore size	ST	A	A1	A2	A3	B	C	D1	D2	D3	D4	E1	E2
Ø25	22	79	101	(124)	120	76	27	15	27	15	□ 19	M10×1.5	Ø8
Ø32	26	89	115	(140)	137.2	85	30	17	31	17	□ 22.2	M10×1.5	Ø8
Ø40	26	94	120	(148)	142.2	90	30	18	31	17	□ 22.2	M10×1.5	Ø10
Ø50	30	104	134	(166)	159.4	100	34	20	37	19	□ 25.4	M12×1.75	Ø12
Ø63	30	109	139	(175)	170.8	105	34	23	48	24	□ 31.8	M16×2.0	Ø15

Bore size	F	H	I	J	K	L	M	N	N1	N2	N3	O	P	R	S	T
Ø25	10	9	Ø46	52	40	Ø6.8	PT 1/8	50	8	17	46	9.5	25	Ø15	Ø18	13
Ø32	10	10	Ø50	56	44	Ø6.8	PT 1/8	55	10	19	52	11.1	29	Ø17	Ø20	14
Ø40	10	10	Ø54	63	48	Ø9	PT 1/8	60	12	19	57	11.1	31	Ø19	Ø22.4	15
Ø50	12	12	Ø66	72	57	Ø9	PT 1/4	65	15	21.5	63.5	12.7	38	Ø21	Ø28	16
Ø63	15	15	Ø80	88	70	Ø11	PT 1/4	75	17	22	68	15.9	48	Ø27	Ø35	18

SCR(L)

HER

HGR(L)

HSR(L)

HBR(L)

HFR(L)

HFK

HCK

HLK

HUR(L)

HUK

HN □

HS □

HCF

HCS

HCQ

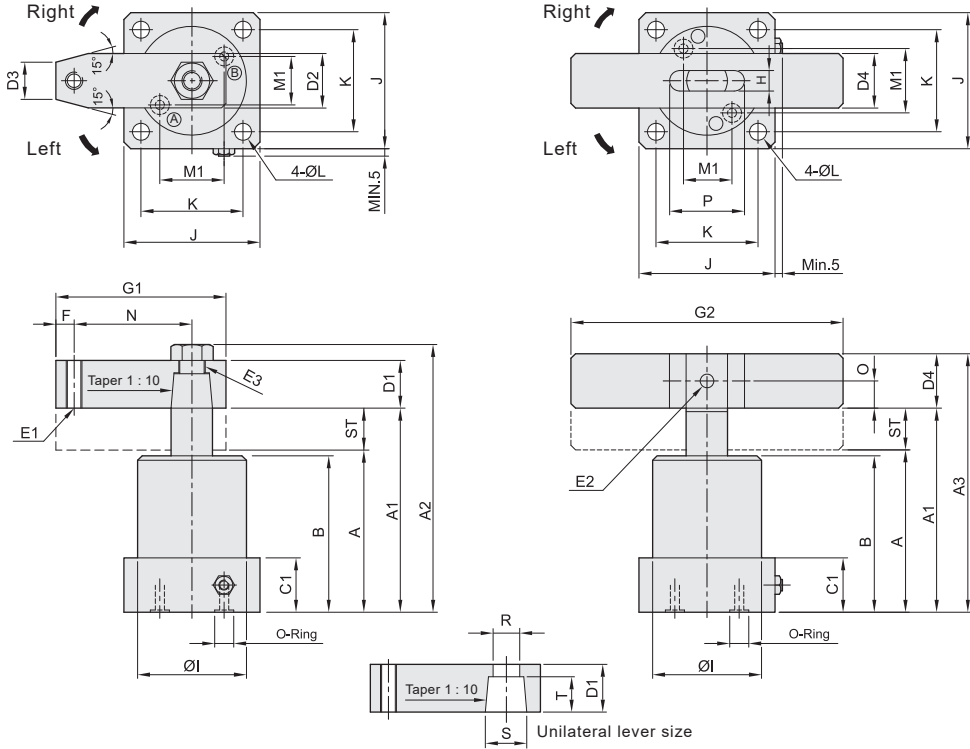
HUR(L) series Directional Rotary Clamp Cylinder

Dimension

CHELIC

○ HUR(L) _ MC type (A) Clamp port (B) Release port

□ Double clamp HUR(L) - MC



Bore size	Stroke (mm)	Rotary stroke (mm)	Clamp stroke (mm)	Pressure area pressure side pull side mm ²	Theoretical clamp force(N) (3.5MPa)	Clamp length	
						G1	G2
Ø25	Ø18	9	13	491/237	830	74	140
Ø32	Ø20	11	15	804/490	1720	81	160
Ø40	Ø22.4	11	15	1257/863	3020	86	160
Ø50	Ø28	13	17	1963/1347	4710	96	180
Ø63	Ø35	13	17	3117/2155	7540	114	200

Bore size	ST	A	A1	A2	A3	B	C1	D1	D2	D3	D4	E1	E2	E3
Ø25	22	79	101	124	120	76	22	15	27	15	□ 19	M10×1.5	Ø8	M14×1.5
Ø32	26	89	115	140	137.2	85	25	17	31	17	□ 22.2	M10×1.5	Ø8	M16×1.5
Ø40	26	94	120	148	142.2	90	25	18	31	17	□ 22.2	M10×1.5	Ø10	M18×1.5
Ø50	30	104	134	166	159.4	100	30	20	37	19	□ 25.4	M12×1.75	Ø12	M20×1.5
Ø63	30	109	139	175	170.8	105	30	23	48	24	□ 31.8	M16×2.0	Ø15	M26×1.5

Bore size	F	G1	G2	H	I	J	K	L	M1	N	O	O-Ring	P	R	S	T
Ø25	10	74	140	9	Ø46	52	40	Ø6.8	19	50	9.5	P7	25	Ø15	Ø18	13
Ø32	10	81	160	10	Ø50	56	44	Ø6.8	21	55	11.1	P7	29	Ø17	Ø20	14
Ø40	10	86	160	10	Ø54	63	48	Ø9	23	60	11.1	P9	31	Ø19	Ø22.4	15
Ø50	12	96	180	12	Ø66	72	57	Ø9	28	65	12.7	P9	38	Ø21	Ø28	16
Ø63	15	114	200	15	Ø80	88	70	Ø11	32	75	15.9	P9	48	Ø27	Ø35	18