

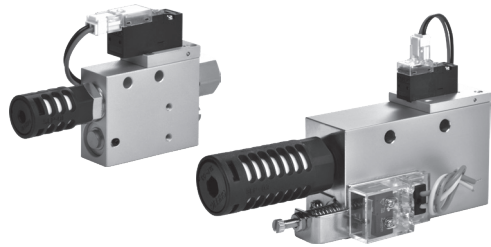
EVM series Control Valve Type Vacuum Ejector

Product features/ Code of order

CHELIC

Feature

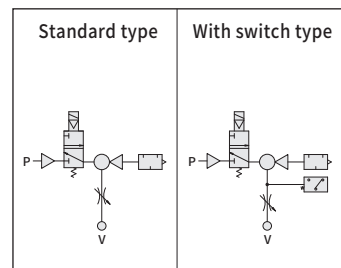
- Negative pressure easy to obtain by generating air pressure.
- The filter element easy to change and replace.
- A variety of choices of nozzle diameter specifications.
- With micro switch(K) and micro switch adjustable type(SK) options



Specification

Item	Model	1005	1007	1010	1012	1515	2020
Fluid		Air					
Ambient and fluid temperature	°C	0 ~ 60					
Max. Vacuum value	MPa(kPa)	0.1~0.6(100~600)					
Operating pressure	MPa(kPa)	0.5(500)					
Nozzle diameter	mm	0.5	0.7	1.0	1.2	1.5	2.0
Max. Vacuum value	kPa(mmHg)	-91.8(-690)					
Valve type		SR-100					
Rated voltage	V	24±10%VDC					
Power consumption	W	1.2					

Vacuum control valve symbol



Mechanical vacuum signal confirmation device

Item	Model	S (Fixed type)	SK (Adjustable type)
Setting range	kPa(mmHg)	-39.9(-300)	-20.0 ~ -53.2(-150 ~ -400)
Setting value before operational	kPa(mmHg)	-39.9(-300)	-46.6(-350)
Accuracy	kPa(mmHg)	± 5.3(± - 40)	
Hysteresis	kPa(mmHg)	4.0 ~ 13.3(30~100)	
Electrical rating		AC125V : 5A、AC250V : 3A	
Ambient and fluid temperature	°C	0 ~ 60	

Code of order **EVM 10 10 - T - S**

1 2 3 4

1	Mark	Model
	10	10 series
	15	15 series
	20	20 series

2	Mark	Port size(mm)	Model
	05	05	10
	07	0.7	
	10	1.0	
	12	1.2	
	15	1.5	15
	20	2.0	20

3	Mark	Electrical entry
	L	
	T	
	W	

● With wire length 300mm

4	Mark	Switching type
	None	Without switch
	S	With micro switch
	SK	With micro switch and adjustable type

● EVM series Selection table :

Item	1 Model	2 Port size	3 Electrical entry	4 Switching type
EVM	10	05	L • T • W	S • SK
		07		
		10		
		12		
	15	15		
20	20			

EV

EVM

VA□

VM□

VM□U

VHS

VSL

VKM

VKMT

VCK

VK20□

VK30□

VQ20□

VFD

VFM

VFU

ERV

ERVL

MVS

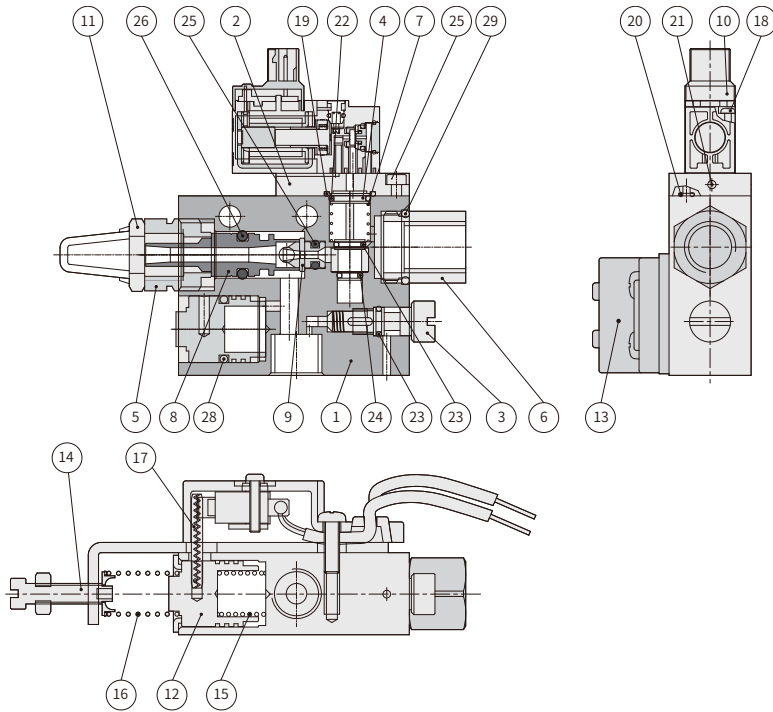
DYC

EVM series Control Valve Type Vacuum Ejector

Product features

CHELIC

Internal structure



Components and Material list

No.	Item	Material	No.	Item	Material
01	Body	Aluminum alloy	16	Spring	Stainless steel
02	Spacer	Aluminum alloy	17	Spring pin	Steel spring
03	Ajusting lever	Stainless steel	18	Round head bolt M3x0.5Px10L	Stainless steel
04	Shaft	Aluminum alloy	19	Spacer A hole O-ring	NBR
05	Exhaust port nut	Carbon steel	20	Spacer P hole O-ring	NBR
06	Nut	Carbon steel	21	Stainless steel bead	Stainless steel
07	Spool spring	Stainless steel	22	Upper spool O-ring	NBR
08	Sleeve	Aluminum alloy	23	Middle spool O-ring	NBR
09	Nozzle	Aluminum alloy	24	Lower spool O-ring	NBR
10	Solenoid vavle	-	25	Hexagon screw	Stainless steel
11	Muffler	Aluminum alloy	26	O-ring	NBR
12	Adjusting block	-	27	O-ring	NBR
13	Sensor combination	-	28	O-ring	NBR
14	Bracket combination	-	29	O-ring	NBR
15	Adjusting block spring	Stainless steel			

EVM series Control Valve Type Vacuum Ejector

Characteristics graph

CHELIC

EV

EVM

VA

VM

VM U

VHS

VSL

VKM

VKMT

VCK

VK20

VK30

VQ20

VFD

VFM

VFU

ERV

ERVL

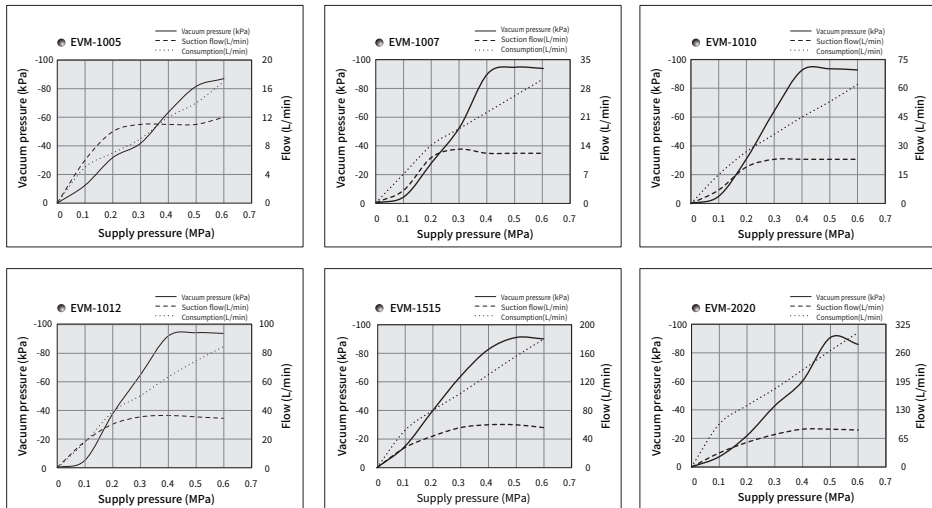
MVS

DYC

Product weight

EVM			
Model	10	15	20
Weight(g)	110	140	380

Characteristics



Vacuum ejectors performance table

Model	Item	Nozzle diameter mm	Suction capacity L/min	Vacuum pressure kPa(mmHg)	Air consumption L/min	Operating pressure MPa(kPa)
EVM-1005		0.5	11	-91.8 (690)	14	0.5 (500)
EVM-1007		0.7	12	-91.8 (690)	26	0.5 (500)
EVM-1010		1.0	23	-91.8 (690)	53	0.5 (500)
EVM-1012		1.2	35	-91.8 (690)	74	0.5 (500)
EVM-1515		1.5	60	-91.8 (690)	156	0.5 (500)
EVM-2020		2.0	86	-91.8 (690)	265	0.5 (500)

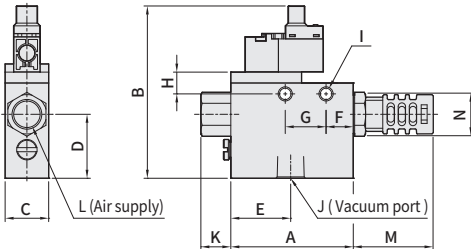
EVM series Control Valve Type Vacuum Ejector

Dimensions

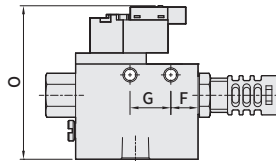
CHELIC

External dimensions

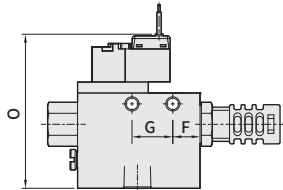
● T type - **T**



● L type - **L**



● W type grommet - **W**

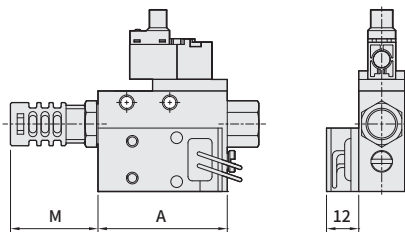


Unit: mm

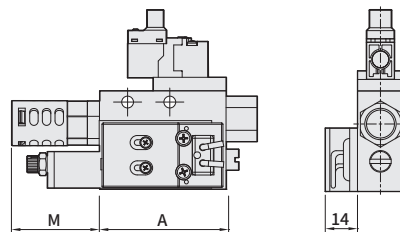
Model	A	B	C	D	E	F	G	H	I	J	K	L	M	N	O	Silencer (Port size)
EVM-05	45	63.9	16	25	22	10	15	4	Ø 4.2	R 1/8	11	R 1/8	31.5	Ø16	56.8	R 1/8
EVM-07	45	63.9	16	25	22	10	15	4	Ø 4.2	R 1/8	11	R 1/8	31.5	Ø16	56.8	R 1/8
EVM-10	45	63.9	16	25	22	10	15	4	Ø 4.2	R 1/8	11	R 1/8	31.5	Ø16	56.8	R 1/8
EVM-12	45	63.9	16	25	22	10	15	4	Ø 4.2	R 1/8	11	R 1/8	31.5	Ø16	56.8	R 1/8
EVM-15	66	63.9	20	25	28	18	25	4	Ø 4.5	R 1/4	—	R 1/4	31.5	Ø18	56.8	R 1/4
EVM-20	85	78.5	30	36.5	33.5	25	32	7	Ø 6	R 3/8	—	R 3/8	60.5	Ø20	71.4	R 3/8

Selection of vacuum signal

● With micro-switch: S



● With switch and adjustable type: SK



Unit: mm

Item	Model	EVM-05	EVM-07	EVM-10	EVM-12	EVM-15	EVM-20
A		45	45	45	45	66	85
M		31.3	31.3	31.3	31.3	31	59