

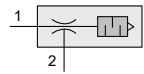
# VM series Vacuum Ejector

## Product features

CHELIC

### Feature

- Light and compact, easy to install.
- It's easy to replace it when the filter element is blocked and affects the flow.
- VML and VMT series are easy piping by the quick coupling.
- VML, VMT, VMK series can easily use bracket to fix it.



### Specification

Item	Model	VMB	VMD	VML	VMK	VMT
Fluid		Air				
Pressure range	MPa (kPa)	0.1~0.6 (0~600)				
Operating pressure	MPa (kPa)	0.5 (500)				
Vacuum pressure	kPa(mmHg)	-91.8 (-690)				
Nozzle diameter	mm	0.5, 0.7, 1.0, 1.5				
Ambient and fluid temperature	°C	5~60				
Material	Body	Copper (Nickel plating)				
	Plastic	NYLON, PBT, PP				
Port size	Rc (PT)	M5x0.8P, 1/8				
Thread		With thread glue				

EV

EVM

VA□

VM□

VM□U

VHS

VSL

VKM

VKMT

VCK

VK20□

VK30□

VQ20□

VFD

VFM

VFU

ERV

ERVL

MVS

DYC

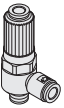

# VM series Vacuum Ejector

Code of order

**CHELIC**

Code of order **VMB 10 6 01**

1 2 3 4

1	Mark	Type	Exhaust	Image
	VMB	B type	Center exhaust	
	VMD	D type	Direct exhaust	

2	Mark	Nozzle size (mm)
	05	0.5
	07	0.7
	10	1.0
	15	1.5

3	Mark	Port size (mm)
	6	Ø6
	8	Ø8
	10	Ø10

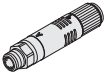
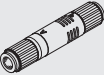
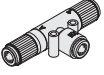
4	Mark	Thread size (mm)
	01	1/8
	02	1/4

● VMB/ D series Selection table:

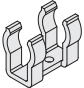
Item	1 Model	2 Nozzle size	3 Port size	4 Thread size
VM	B • D	05	6	01
			6	
			8	
			8	
		10	6	02
			8	
			8	
			10	

Code of order **VMK 10 6 01 - C**

1 2 3 4 5

1	Mark	Type	Exhaust	Image
	VMK	Direct-mounting	Direct exhaust	
	VML	Direct-piping	Direct exhaust	
	VMT	Union T	Center exhaust	

4	Mark	Thread size (mm)
	M5	M5
	01	1/8
	02	1/4
	03	3/8
	04	1/2

5	Mark	Bracket
	None	No bracket
	C	

● VMK limited specification options

● VMK/ L / T series Selection table:

2	Mark	Nozzle size (mm)
	05	0.5
	10	1.0
	15	1.5
	20	2.0

3	Mark	Port size (mm)
	4	Ø4
	6	Ø6
	8	Ø8
	10	Ø10
	12	Ø12

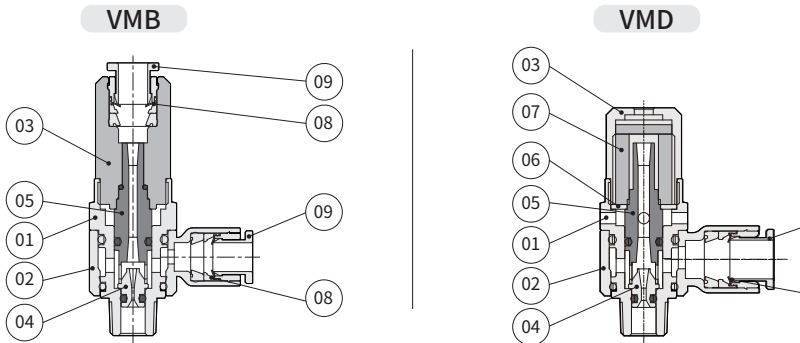
Item	1 Model	2 Nozzle size	3 Port size	4 Thread size	5 Bracket
VM	K	05	4	M5	C
			6	01	
		10	6	01	
			8	02	
		15	8	03	
			10	04	
	L • T	05	4	—	
			6	—	
		10	6	—	
			8	—	
		15	8	—	
			10	—	
20	10	—			
	12	—			

# VM series Vacuum Ejector

## Product features

CHELIC

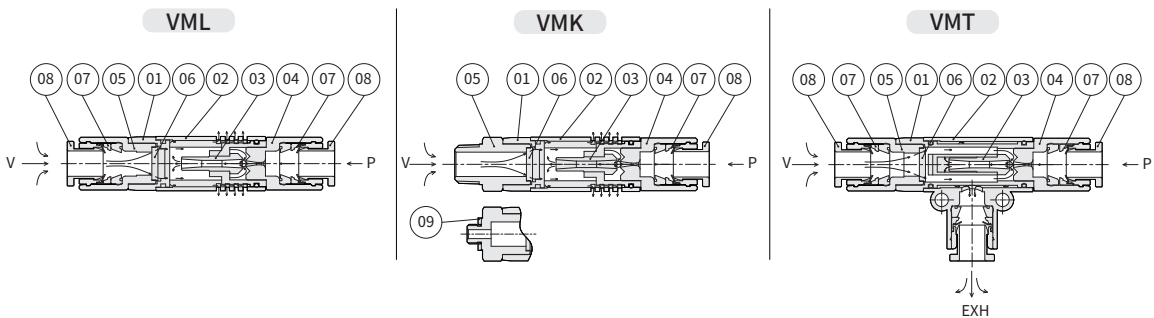
### Internal structure



### Components and Material list

No.	Item	Material	No.	Item	Material
01	Metal body	Copper alloy	06	Plain washer	Copper alloy
02	Plastic body	Nylon fiber	07	Filter	EA30
03	Filter cap	Copper alloy	08	The 3-fitting part	-
04	Nozzle	Copper alloy	09	Release ring	POM
05	Exhaust metal sleeve	Copper alloy			

### Internal structure



### Components and Material list

No.	Item	Material	No.	Item	Material
01	Plastic body	POM	06	Element	EA30
02	Outer shell	Nylon fiber	07	The 3-fitting part	-
03	Sleeve	Copper alloy	08	Release ring	POM
04	P port fitting	Copper alloy	09	Seal	paper
05	V port fitting	Copper alloy			

EV

EVM

VA□

VM□

VM□U

VHS

VSL

VKM

VKMT

VCK

VK20□

VK30□

VQ20□

VFD

VFM

VFU

ERV

ERVL

MVS

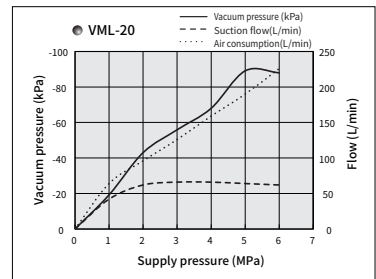
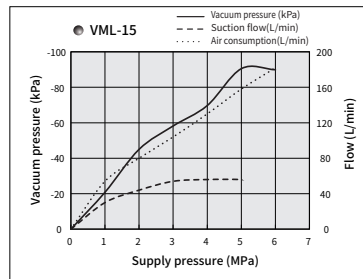
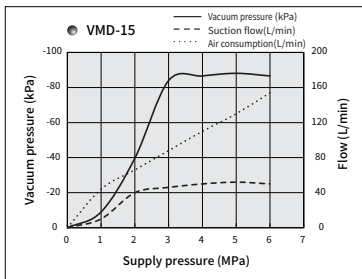
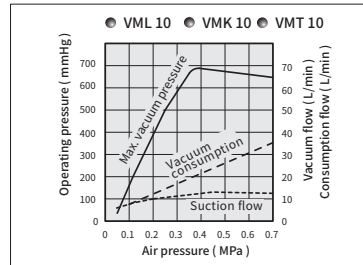
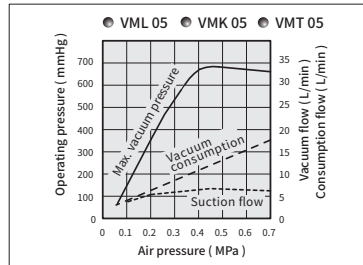
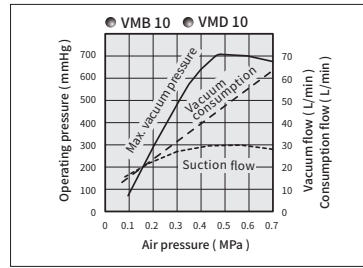
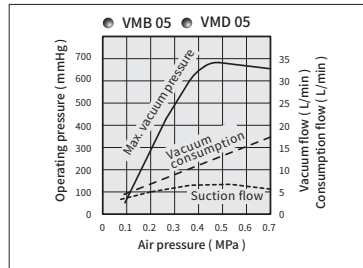
DYC

# VM series Vacuum Ejector

## Characteristics graph

CHELIC

### Characteristics

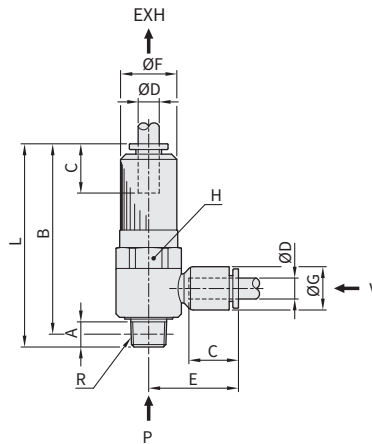


# VM series Vacuum Ejector

## Dimensions

CHELIC

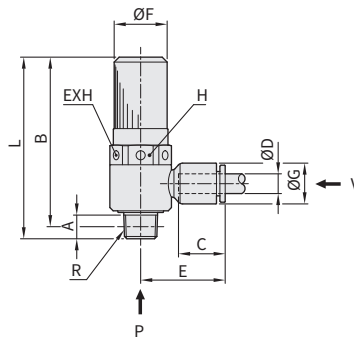
### VMB series



Unit: mm

Model	Port size ØD	Thread size R	A	B	C	E	ØF	ØG	Opposite dim. H	L	Nozzle size mm	Suction flow L/min ANR	Weight (g)
VMB-05-601	Ø 6	1/8	7.2	54.6	16.7	25.5	16	12.4	17	58.2	0.5	11.5	45
VMB-07-601	Ø 6		7.2	54.6	16.7	25.5	16	12.4	17	58.7	0.7	23	45
VMB-07-801	Ø 8		7.2	56.2	18.8	27.6	16	14.3	17	59.8	0.7	23	50
VMB-10-601	Ø 6		7.2	54.6	16.7	25.5	16	12.4	17	58.2	1.0	45	45
VMB-10-801	Ø 8		7.2	56.2	18.8	27.6	16	14.3	17	59.8	1.0	45	50
VMB-15-802	Ø 8	1/4	8	69	18.8	27.6	19	14.3	21	73	1.5	52	53
VMB-15-102	Ø 10		8	69	21	29.6	19	17.9	21	73	1.5	52	53

### VMD series



Unit: mm

Model	Port size ØD	Thread size R	A	B	C	E	ØF	ØG	Opposite dim. H	L	Nozzle size mm	Suction flow L/min ANR	Weight (g)
VMD-05-601	Ø 6	1/8	7.2	45	16.7	25.5	16	12.4	17	48.6	0.5	11.5	45
VMD-07-601	Ø 6		7.2	45	16.7	25.5	16	12.4	17	48.6	0.7	23	45
VMD-07-801	Ø 8		7.2	45	18.8	27.6	16	14.3	17	48.6	0.7	23	50
VMD-10-601	Ø 6		7.2	45	16.7	25.5	16	12.4	17	48.6	1.0	45	45
VMD-10-801	Ø 8		7.2	45	18.8	27.6	16	14.3	17	48.6	1.0	45	50
VMD-15-802	Ø 8	1/4	8	54	18.8	27.6	19	14.3	21	58	1.5	52	53
VMD-15-102	Ø 10		8	54	21	29.6	19	17.9	21	58	1.5	52	53

EV

EVM

VA □

VM □

VM □ U

VHS

VSL

VKM

VKMT

VCK

VK20 □

VK30 □

VQ20 □

VFD

VFM

VFU

ERV

ERVL

MVS

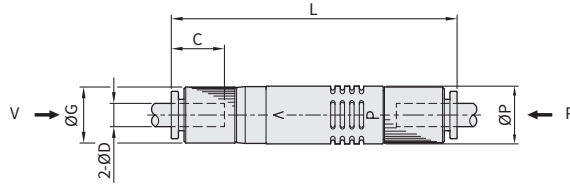
DYC

# VM series Vacuum Ejector

## Dimensions

CHELIC

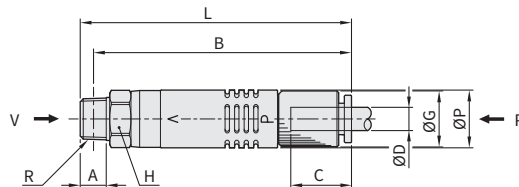
### VML series



Unit: mm

Model	Port size ØD	C	ØG	L	ØP	Nozzle size mm	Suction flow L/min ANR	Weight (g)
VML-05-04	Ø4	14.1	13	60	14.3	0.5	15	25
VML-05-06	Ø6	17.1	13	65.9	14.3	0.5	15	25
VML-10-06	Ø6	17.1	15	75.6	15.8	1.0	23	30
VML-10-08	Ø8	18.7	15	78.5	15.8	1.0	23	30
VML-15-08	Ø8	19.7	18	79.6	18.8	1.5	56	45
VML-15-10	Ø10	19.7	18	79.6	18.8	1.5	56	45
VML-20-10	Ø10	21	21	90.2	21.8	2.0	64	53
VML-20-12	Ø12	21	21	90.2	21.8	2.0	64	53

### VMK series



Unit: mm

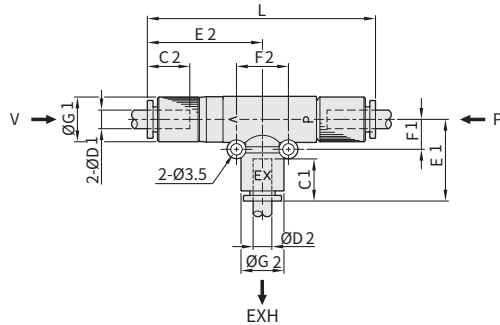
Model	Port size ØD	Thread size R	A	B	C	ØG	Opposite dim. H	L	ØP	Nozzle size mm	Suction flow L/min ANR	Weight (g)
VMK-05-4M5	Ø4	M5x0.8p	3.1	55	14.1	13	12	56.4	14.3	0.5	15	20
VMK-05-601	Ø6	PT 1/8	6	59.6	17.1	13	12	62.6	14.3	0.5	15	25
VMK-10-601	Ø6	PT 1/8	6	70.4	17.1	15	14	73.4	15.8	1.0	23	30
VMK-10-801	Ø8		6	72	18.7	15	14	75	15.8	1.0	23	30
VMK-15-802	Ø8	PT 1/4	8	69.9	18.7	18	17	74.3	18.8	1.5	56	45
VMK-15-103	Ø10	PT 3/8	8	69.9	19.7	18	17	74.3	18.8	1.5	56	45
VMK-20-103	Ø10	PT 3/8	10	83.5	19.7	21	21	89	21.8	2.0	64	53
VMK-20-124	Ø12	PT 1/2	10	83.5	21	21	21	89	21.8	2.0	64	53

# VM series Vacuum Ejector

## Dimensions

CHELIC

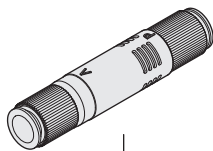
### VMT series



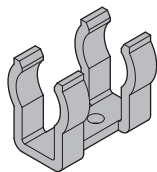
Unit: mm

Model	Port size ØD1	Port size ØD2	C1	C2	E1	E2	F1	F2	ØG1	ØG2	L	Nozzle size mm	Suction flow L/min ANR	Weight (g)
VMT-05-04	Ø4	Ø6	14.1	17.1	23.8	29.1	8.7	15	13	12.4	60	0.5	15	40
VMT-05-06	Ø6		17.1		23.8	32.1	8.7	15	13	12.4	65.9	0.5	15	40
VMT-10-06	Ø6	Ø8	17.1	18.7	27.3	40.3	9.7	15	15	14.3	75.6	1.0	23	45
VMT-10-08	Ø8		18.7		27.3	41.9	9.7	15	15	14.3	78.5	1.0	23	35
VMT-15-08	Ø8	Ø10	18.7	20.9	42	39.8	11.2	21.3	18	17.8	79.6	1.5	56	58
VMT-15-10	Ø10		18.7		42	39.8	11.2	21.3	18	17.8	79.6	1.5	56	54
VMT-20-10	Ø10	Ø12	18.7	23.8	50	45.1	12.7	24.6	21	21.1	90.2	2.0	64	69
VMT-20-12	Ø12		18.7		50	45.1	12.7	24.6	21	21.1	90.2	2.0	64	64

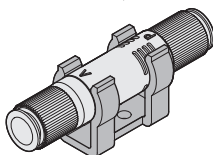
### Installation methods



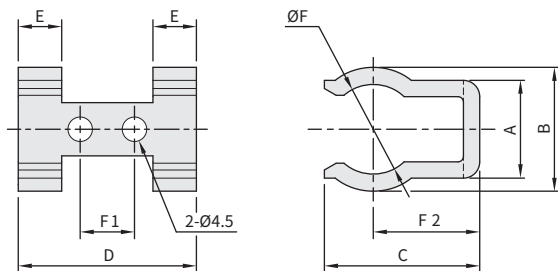
Vacuum ejector



Bracket



Image



Unit: mm

Vacuum ejector	Bracket	A	B	C	D	E	ØF	F1	F2
VM □ -05	VM-C01	15	18.5	28.6	32.8	5.7	12.5	10	19.6
VM □ -10	VM-C01								
VM □ -15	VM-C02	18	21	28.6	32.8	8	16.5	10	19.6
VM □ -20	VM-C03	19.6	23.9	34.8	39.4	10	20.4	14	23.8

EV

EVM

VA □

VM □

VM □ U

VHS

VSL

VKM

VKMT

VCK

VK20 □

VK30 □

VQ20 □

VFD

VFM

VFU

ERV

ERVL

MVS

DYC