

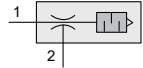
VMBU/ VMDU series Elbow Type Vacuum Ejector

Product features/ Code of order

CHELIC

Feature

- Light and compact, easy to install.
- It's easy to replace it when the filter element is blocked and affects the flow.
- U type fitting can rotary 360, easy piping.



Specification

Item	Model	VMBU, VMDU
Fluid		Air
Pressure range	MPa (kPa)	0.1~0.6(100~600)
Maintain pressure	MPa (kPa)	0.5 (500)
Max. Vacuum value	kPa(mmHg)	-91.8 (-690)
Nozzle diameter	mm	0.5, 0.7, 1.0, 1.5
Ambient and fluid temperature	°C	5 ~ 60
Material	Body	Copper (Nickel plating)
	Plastic	NYLON, PBT, PP
Port size	Rc (PT)	1/8, 1/4
Thread glue		With thread glue

Code of order **VMBU 10 - 6 01**

1 — 2 — 3 — 4

1	Mark	Type	Exhaust	Image
	VMBU	B type	Center exhaust	
	VMDU	D type	Air release	

2	Mark	Nozzle (mm)
	05	0.5
	07	0.7
	10	1.0
	15	1.5

3	Mark	Port size (mm)
	6	Ø6
	8	Ø8
	10	Ø10

4	Mark	Thread size (mm)
	01	1/8
	02	1/4

● VMBU/ DU series Selection table:

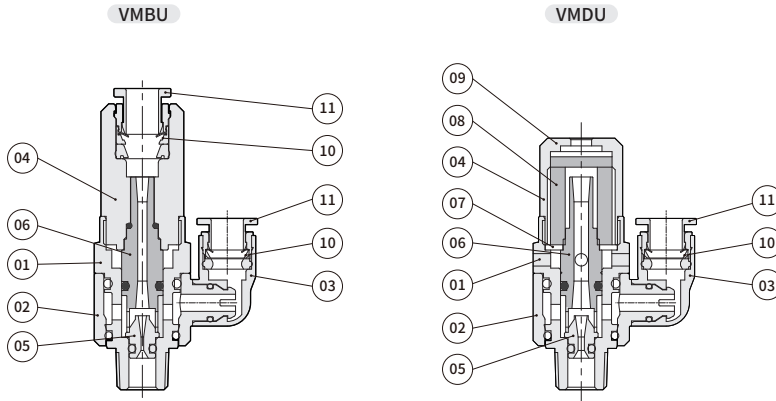
Item	1 Model	2 Nozzle	3 Port size	4 Thread size
VM	BU • DU	05	6	01
			6	01
		07	8	01
			6	01
		10	8	01
			8	02
		15	10	02
			10	02

VMBU/ VMDU series Elbow Type Vacuum Ejector

Product features/

CHELIC

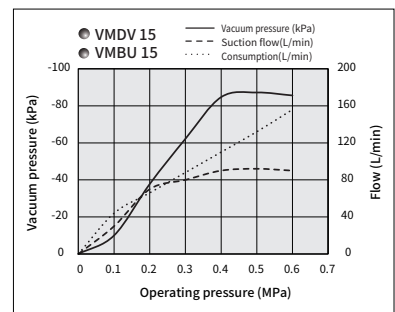
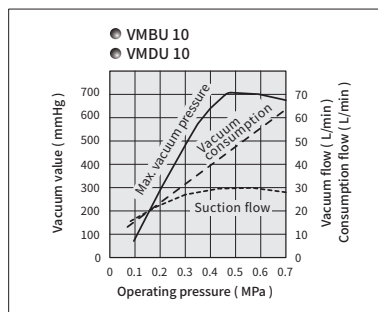
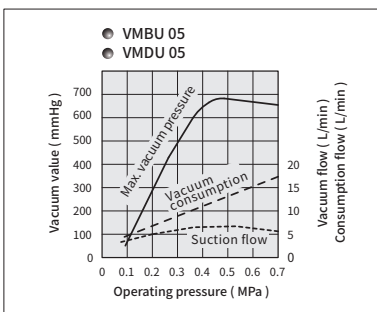
Internal structure



Components and Material list

No.	Item	Material	No.	Item	Material
01	Metal body	Copper alloy	07	Plain washer	Copper alloy
02	Plastic body	Nylon fiber	08	Filter	EA30
03	Joint plastic body	Nylon fiber	09	Element	EA30
04	Filter cap	Copper alloy	10	The 3-fitting part	Copper alloy
05	Nozzle	Copper alloy	11	Release ring	POM
06	Exhaust metal sleeve	Copper alloy			

Characteristics



EV

EVM

VA □

VM □

VM □ U

VHS

VSL

VKM

VKMT

VCK

VK20 □

VK30 □

VQ20 □

VFD

VFM

VFU

ERV

ERVL

MVS

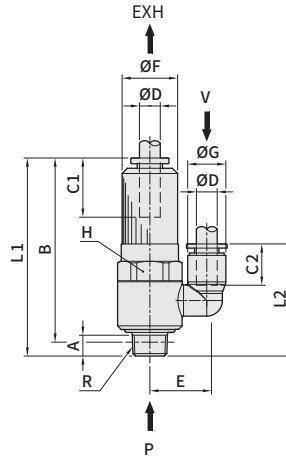
DYC

VMBU/ VMDU series Elbow Type Vacuum Ejector

Dimensions

CHELIC

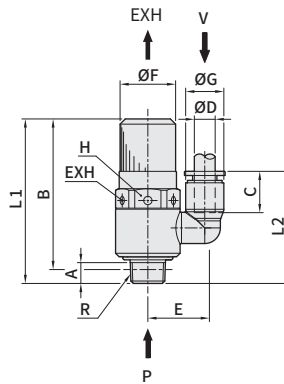
VMBU series



Unit: mm

Model	Port size ØD	Thread size R	A	B	C1	C2	E	ØF	ØG	L1	L2	Opposite dim. H	Nozzle size mm	Suction flow L/min ANR	Weight (g)
VMBU-05-601	Ø 6	1/8	6	53	16.5	11.5	16.4	16	11	57	32.3	17	0.5	15	45
VMBU-07-601	Ø 6		6	53	16.5	11.5	16.4	16	11	57	32.3	17	0.7	23	45
VMBU-07-801	Ø 8		6	53.3	18.2	17	21.5	16	14.3	57.3	38.3	17	0.7	23	50
VMBU-10-601	Ø 6		6	53	16.5	11.5	16.4	16	11	57	32.3	17	1.0	45	45
VMBU-10-801	Ø 8		6	53.3	18.2	17	21.5	16	14.3	57.3	38.3	17	1.0	45	50
VMBU-15-802	Ø 8	1/4	10	69	18.2	17	23.7	21	14.3	76	45.1	21	1.5	52	53
VMBU-15-102	Ø 10		10	69.3	20	20	26	21	17.8	76.3	48.9	21	1.5	52	53

VMDU series



Unit: mm

Model	Port size ØD	Thread size R	A	B	C	E	ØF	ØG	L1	L2	Opposite dim. H	Nozzle size mm	Suction flow L/min ANR	Weight (g)
VMDU-05-601	Ø 6	1/8	6	43.4	11.5	25.5	16	11	47.4	32.3	17	0.5	15	45
VMDU-07-601	Ø 6		6	43.4	11.5	25.5	16	11	47.4	32.3	17	0.7	23	45
VMDU-07-801	Ø 8		6	43.4	17	27.6	16	14.3	47.4	38.3	17	0.7	23	50
VMDU-10-601	Ø 6		6	43.4	11.5	25.5	16	11	47.4	32.3	17	1.0	45	45
VMDU-10-801	Ø 8		6	43.4	17	27.6	16	14.3	47.4	38.3	17	1.0	45	50
VMDU-15-802	Ø 8	1/4	10	64.1	17	27.6	21	14.3	71.1	45.1	21	1.5	52	53
VMDU-15-102	Ø 10		10	64.1	20	29.6	21	17.8	71.1	48.9	21	1.5	52	53