

# PC□ series 3-Stage Vacuum Pad

## Product features

CHELIC

### Feature

- High availability: With three layers of corrugated design, it has strong adaptability and high flexibility and fitness.
- Diversification: Various sizes, materials and brackets can be selected.
- Durability: Rubber with extremely high oil resistance material, long lifetime and high strength.



### PC series selection table:

Pad type	① Bracket					② Outer diameter	③ Stroke	④ Vacuum pad material				⑤ Ball joint type		
	F	K	T	FS	TS			N	S	SE	E	05	20	60
PC	●		●	●	●	05	3 • 10	●	●	●	●	●		
	●		●	●	●	07		●	●	●	●	●		
	●	●	●	●	●	10	4 • 10	●	●	●	●	●		
	●	●	●	●	●	15		●	●	●	●	●		
	●	●	●	●	●	20	6 • 15	●	●	●	●		●	
	●	●	●	●	●	30		●	●	●	●		●	
	●	●	●	●	●	40		●	●	●	●		●	
	●	●	●	●	●	60	10 • 30	●	●	●	●			●

# PC□ series 3-Stage Vacuum Pad

Code of order

CHELIC

Code of order **PC FS 10 x 4 N - R**



1	Bracket	Vertical entry	Vertical entry with fitting	Side entry	Vertical entry with spring	Side entry with spring
	Mark	F	K	T	FS	TS
	Image					

2	Mark	05	07	10	15	20	30	40	60
	Pad dia. (mm)	Ø5	Ø7	Ø10	Ø15	Ø20	Ø30	Ø40	Ø60

3 ● Only available to FS, TS series

Mark	Stroke (mm)	Outer diameter (mm)	Mark	Stroke (mm)	Outer diameter (mm)
3	3	Ø5, Ø7	6	6	Ø20, Ø30, Ø40
10	10				
Mark	Stroke (mm)	Outer diameter (mm)	Mark	Stroke (mm)	
4	4	Ø10, Ø15	15	15	
10	10				

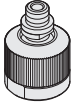
● Only available to TS series

Mark	Stroke (mm)	Outer diameter (mm)
10	10	Ø60
30	30	

4	Mark	Vacuum pad material	Hardness (HS)	Ambient and fluid temperature	Color	Electrical resistance(Note)
	N	NBR(Rubber)	A60/S	-26~120°C	Black	-
	S	Silicon, Silicone rubber	A60/S	-20~180°C	White	-
	SE	Anti-static rubber	A60/S	-20~180°C	Black	10 <sup>4</sup> ~10 <sup>6</sup> Ω • cm
	E	Low resistance & anti-static rubber	A70/S	-20~180°C	Black	200 Ω • cm

● Note: The above value covers only general characteristics of subject rubber materials. Pad materials used by CHELIC pass internal standard.

5		With ball joint type
Mark	Outer diameter (mm)	
05	Ø5, Ø6, Ø8, Ø10, Ø15	
20	Ø20, Ø25, Ø30, Ø35, Ø40, Ø50	
60	Ø60, Ø80	



● Note: According to vacuum pad specification to py proper free holder.

● Note :Please refer to P3-2.96

PA

PB

PC

PAG

PAO

PAP

PAQ

PAW

PAL

PBL

PCL

PAR

PS

VP

# PC□ series 3-Stage Vacuum Pad

## Product features

CHELIC

### Vacuum pad material

Mark	Vacuum pad material	Hardness (HS)	Ambient and fluid temperature	Color	Electrical resistance(Note)
N	NBR(Rubber)	A50/S	-26~120°C	Black	-
S	Silicon, Silicone rubber	A50/S	-20~180°C	White	-
SE	Anti-static rubber	A50/S	-20~180°C	Black	10 <sup>4</sup> ~10 <sup>6</sup> Ω·cm
E	Low resistance & anti-static rubber	A70/S	-20~180°C	Black	200Ω·cm

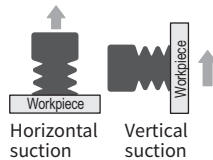
Note: The above value covers only general characteristics of subject rubber materials. Pad materials used by CHELIC pass internal standard.

### Vacuum control system

Theoretical suction is calculated from pad size and vacuum value, which is only a number for reference. Theoretical suction is a number under static status. Please reserve enough margin while adding workpieces and movement.

Before confirm the Qty and location of suction pad, please reserve enough margin.

#### ● Suction type



#### ● Calculation formula

$$W = \frac{P \times A}{-10}$$

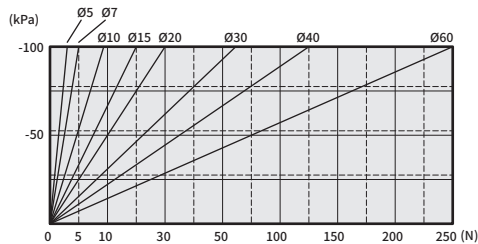
W: Force N

P: Vacuum pressure kPa

A: Pad area dimensions cm<sup>2</sup>

### Theoretical suction

● Pad diameter: Ø5~Ø60mm



### Product weight

Item	PC							
Model	5	7	10	15	20	30	40	60
Weight(g)	0.19	0.21	0.55	1.33	2.63	7.4	19	56

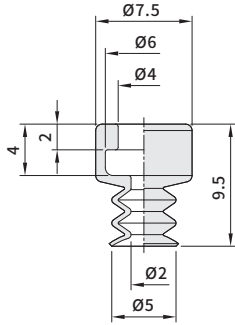
# PC□ series 3-Stage Vacuum Pad

Dimensions-Three layers PC series

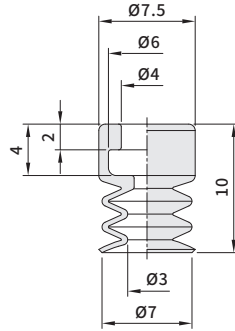
CHELIC

## External dimensions

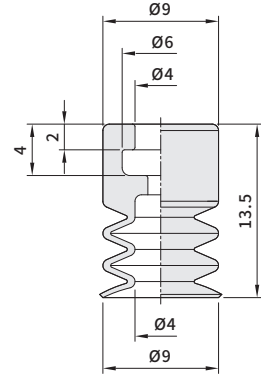
● PC - 05



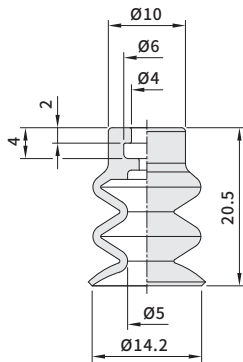
● PC - 07



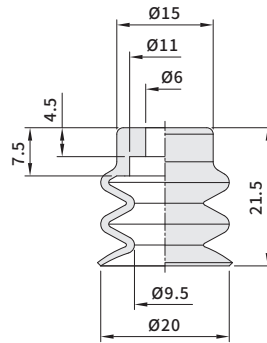
● PC - 10



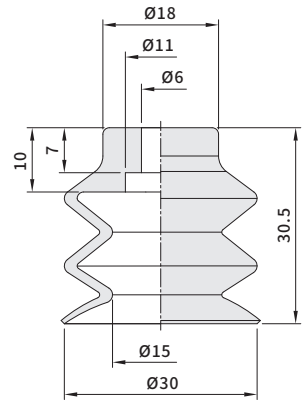
● PC - 15



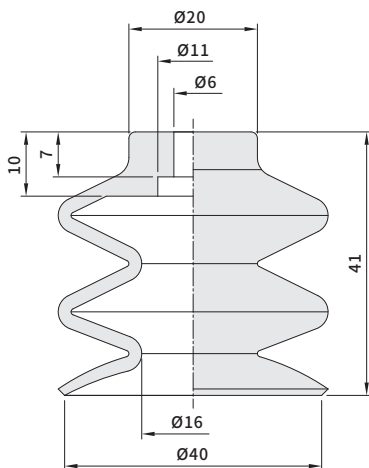
● PC - 20



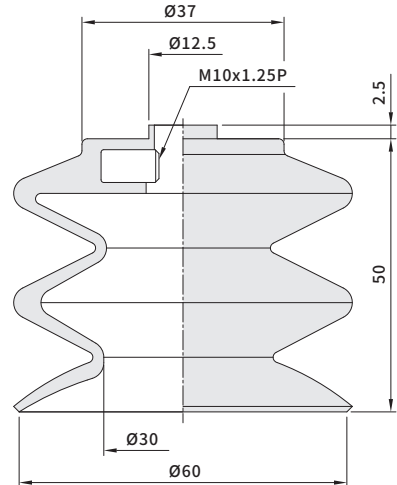
● PC - 30



● PC - 40



● PC - 60



PA

PB

PC

PAG

PAO

PAP

PAQ

PAW

PAL

PBL

PCL

PAR

PS

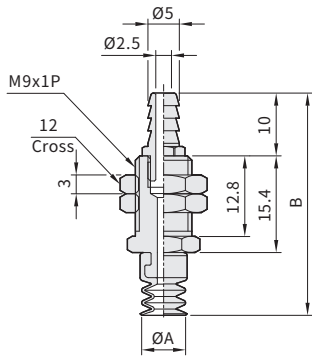
VP

# PC□ series 3-Stage Vacuum Pad

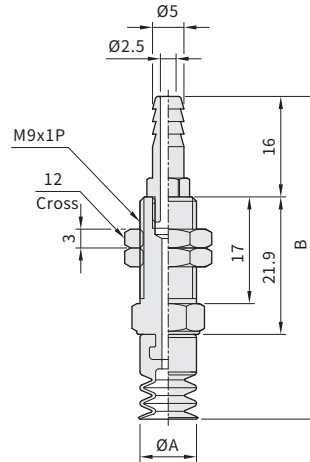
Dimensions-PCF series/ Vertical entry

CHELIC

## Ø5, Ø7



## Ø10, Ø15



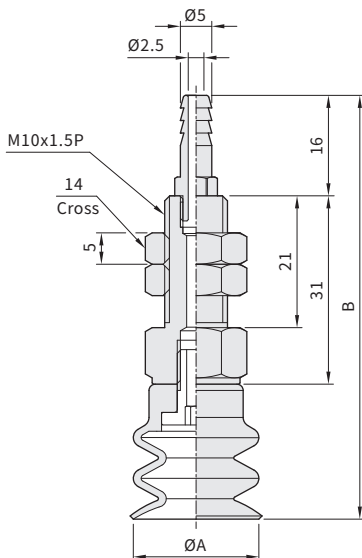
Unit: mm

Pad type	Model	Pad dia. A	Whole length B	Size of PU tube
Circle pad	PCF-05	Ø5	34.9	PU tube 6 x 4
	PCF-05	Ø7	35.4	

Unit: mm

Pad type	Model	Pad dia. A	Whole length B	Size of PU tube
Circle pad	PCF-10	Ø10	51.4	PU tube 6 x 4
	PCF-15	Ø15	58.4	

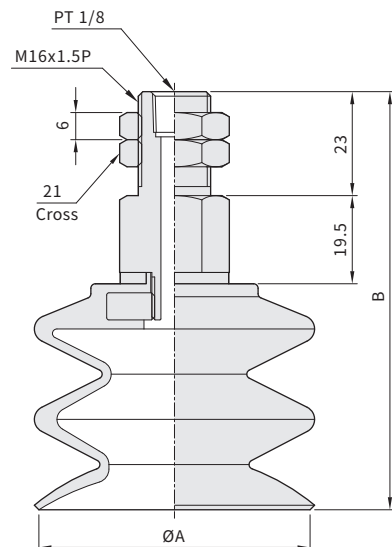
## Ø20, Ø30, Ø40



Unit: mm

Pad type	Model	Pad dia. A	Whole length B	Size of PU tube
Circle pad	PCF - 20	Ø20	67.5	PU tube 6 x 4
	PCF - 30	Ø30	76.5	
	PCF - 40	Ø40	87	

## Ø60



Unit: mm

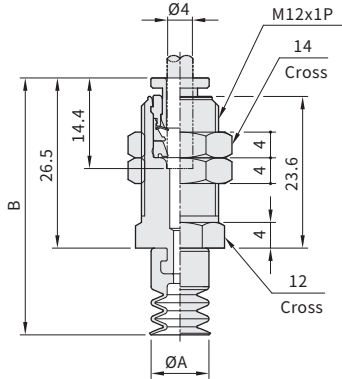
Pad type	Model	Pad dia. A	Whole length B	Size of PU tube
Circle pad	PCF-60	Ø60	92.5	PT 1/8

# PC□ series 3-Stage Vacuum Pad

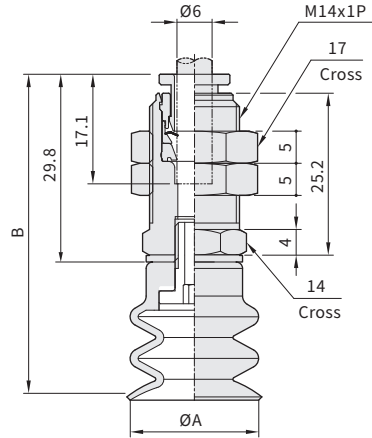
Dimensions-PCK series/ Vertical entry with fitting

CHELIC

## ■ Ø10, Ø15



## ■ Ø20, Ø30, Ø40



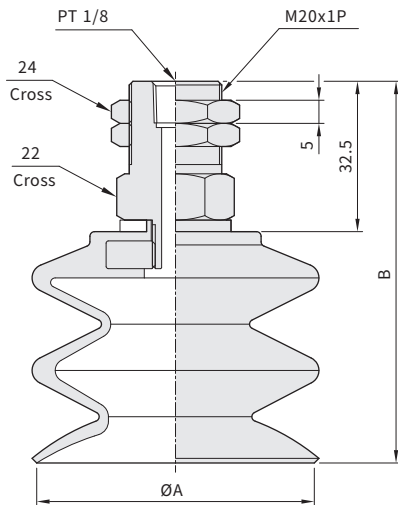
Unit: mm

Pad type	Model	Pad dia. A	Whole length B	Size of PU tube
Circle pad	PCK-10	Ø10	40	PU tube Ø6xØ4
	PCK-15	Ø15	47	

Unit: mm

Pad type	Model	Pad dia. A	Whole length B	Size of PU tube
Circle pad	PCK-20	Ø20	51.3	PU tube 6 x 4
	PCK-30	Ø30	60.3	
	PCK-40	Ø40	70.8	

## ■ Ø60



Unit: mm

Pad type	Model	Pad dia. A	Whole length B	Size of PU tube
Circle pad	PCK-60	Ø60	82.5	PT 1/8

PA

PB

PC

PAG

PAO

PAP

PAQ

PAW

PAL

PBL

PCL

PAR

PS

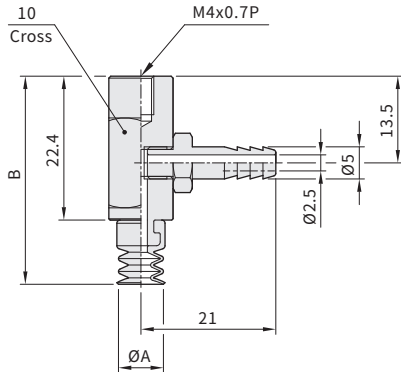
VP

# PC□ series 3-Stage Vacuum Pad

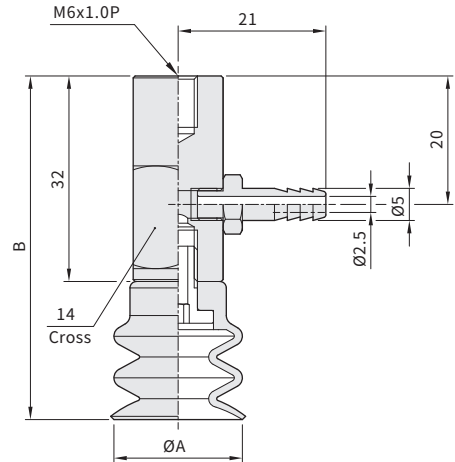
Dimensions-PCT series/ Side entry

CHELIC

■ Ø5 ~ Ø15



■ Ø20, Ø30, Ø40



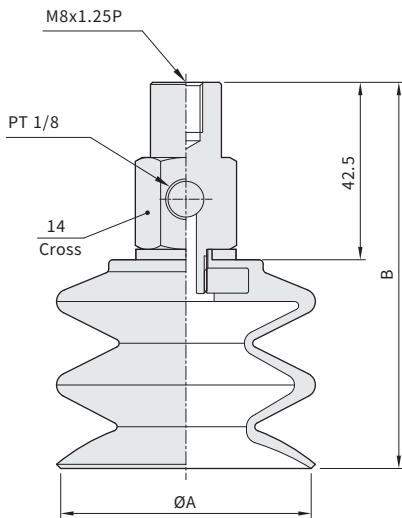
Unit: mm

Pad type	Model	Pad dia. A	Whole length B	Size of PU tube
Circle pad	PCT-05	Ø10	31.9	PU tube 6 x 4
	PCT-07	Ø15	32.4	
	PCT-10	Ø10	35.9	
	PCT-15	Ø15	42.9	

Unit: mm

Pad type	Model	Pad dia. A	Whole length B	Size of PU tube
Circle pad	PCT-20	Ø20	53.5	PU tube 6 x 4
	PCT-30	Ø30	62.5	
	PCT-40	Ø40	73	

■ Ø60



Unit: mm

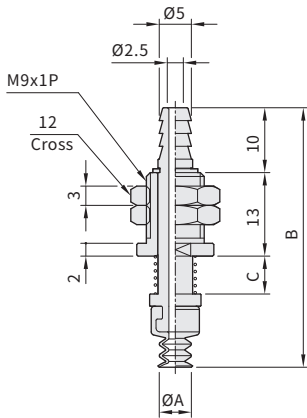
Pad type	Model	Pad dia. A	Whole length B	Size of PU tube
Circle pad	PCT-60	Ø60	92.5	PT 1/8

# PC□ series 3-Stage Vacuum Pad

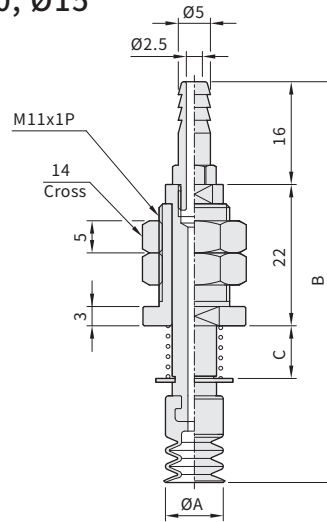
Dimensions-PCFS series/ Vertical entry with spring

CHELIC

## Ø5, Ø7



## Ø10, Ø15



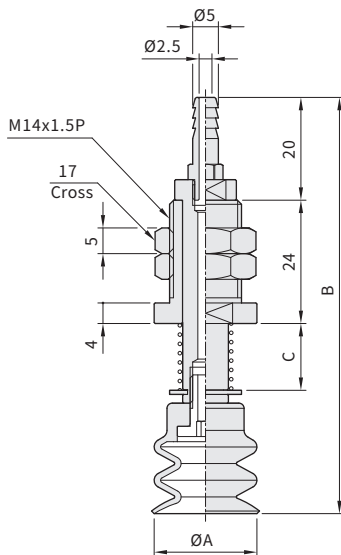
Unit: mm

Unit: mm

Pad type	Model	Pad dia. A	Stroke 3		Stroke 10		Size of PU tube 6 x 4	Spring compression length
			B	C	B	C		
Circle pad	PCFS-05	Ø5	40.4	6	54.4	20	PU tube 6 x 4	3, 10
	PCFS-07	Ø7	40.9	6	54.9	20		

Pad type	Model	Pad dia. A	Stroke 4		Stroke 10		Size of PU tube 6 x 4	Spring compression length
			B	C	B	C		
Circle pad	PCFS-10	Ø10	62.4	8	74.4	20	PU tube 6 x 4	4, 10
	PCFS-15	Ø15	69.4	8	81.4	20		

## Ø20, Ø30, Ø40



Unit: mm

Pad type	Model	Pad dia. A	Stroke 6		Stroke 15		Size of PU tube 6 x 4	Spring compression length
			B	C	B	C		
Circle pad	PCFS-20	Ø20	81	13	98	30	PU tube 6 x 4	6, 15
	PCFS-30	Ø30	90	13	107	30		
	PCFS-40	Ø40	100.5	13	117.5	30		

PA

PB

PC

PAG

PAO

PAP

PAQ

PAW

PAL

PBL

PCL

PAR

PS

VP

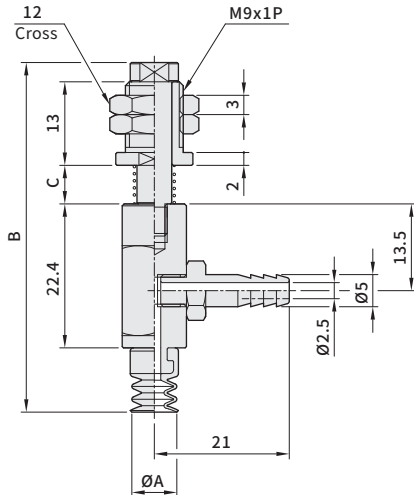


# PC□ series 3-Stage Vacuum Pad

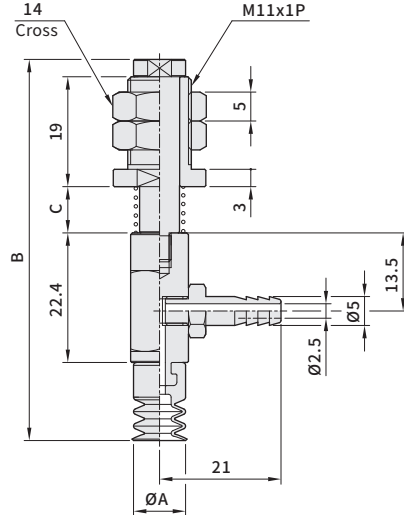
Dimensions-PCTS series/ Side entry with spring

CHELIC

## ■ Ø5, Ø7



## ■ Ø10, Ø15



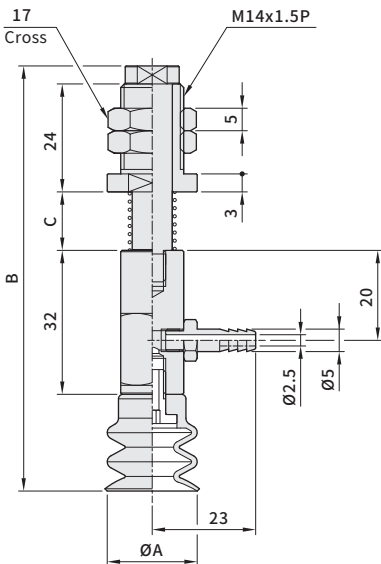
Pad type	Model	Pad dia. A	Stroke 3		Stroke 10		Size of PU tube	Spring compression length
			B	C	B	C		
Circle pad	PCTS-05	Ø5	53.9	6	67.9	20	PU tube 6 x 4	3, 10
	PCTS-07	Ø7	54.4	6	68.4	20		

Unit: mm

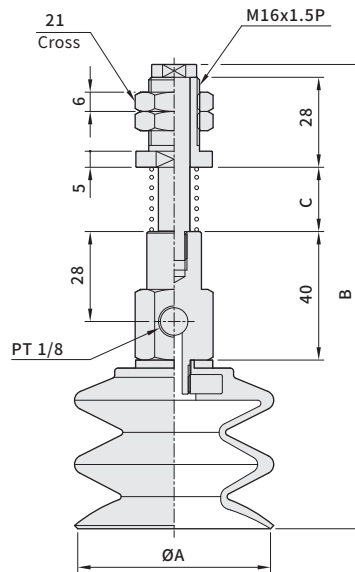
Pad type	Model	Pad dia. A	Stroke 4		Stroke 10		Size of PU tube	Spring compression length
			B	C	B	C		
Circle pad	PCTS-10	Ø10	65.9	8	77.9	20	PU tube 6 x 4	4, 10
	PCTS-15	Ø15	72.9	8	84.9	20		

Unit: mm

## ■ Ø20, Ø30, Ø40



## ■ Ø60



Pad type	Model	Pad dia. A	Stroke 6		Stroke 15		Size of PU tube	Spring compression length
			B	C	B	C		
Circle pad	PCTS-20	Ø20	94.5	13	111.5	30	PU tube 6 x 4	6, 15
	PCTS-30	Ø30	103.5	13	120.5	30		
	PCTS-40	Ø40	114	13	131.5	30		

Unit: mm

Pad type	Model	Pad dia. A	Stroke 10		Stroke 30		Size of PU tube	Spring compression length
			B	C	B	C		
Circle pad	PCTS-60	Ø60	144.5	20	174.5	60	Rc 1/8"	10, 30

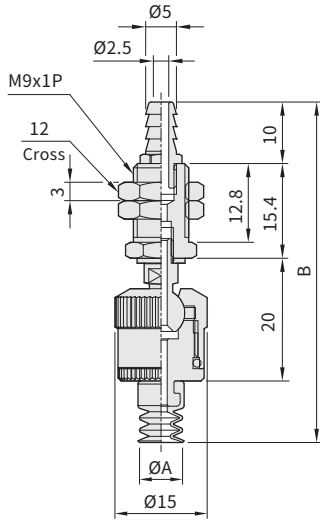
Unit: mm

# PC□ series 3-Stage Vacuum Pad

Dimensions-PCF-R series/ Vertical entry-Ball joint type

CHELIC

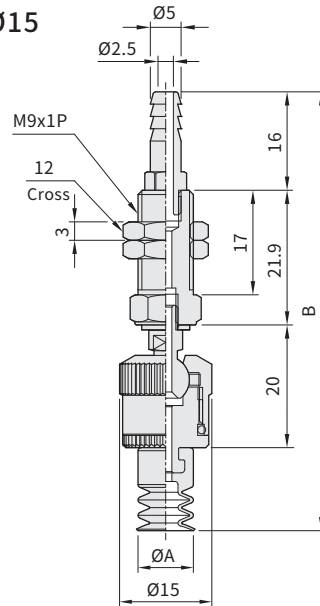
## Ø5, Ø7



Unit: mm

Pad type	Model	Pad dia. A	Whole length B	Size of PU tube
Circle pad	PCF-05-R	Ø5	54.9	PU tube 6 x 4
	PCF-07-R	Ø7	55.4	

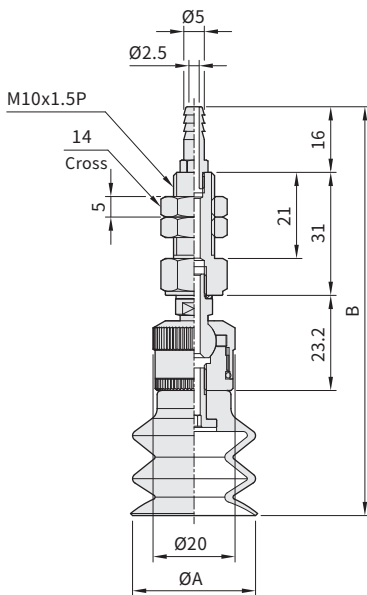
## Ø10, Ø15



Unit: mm

Pad type	Model	Pad dia. A	Whole length B	Size of PU tube
Circle pad	PCF-10-R	Ø10	71.4	PU tube 6 x 4
	PCF-15-R	Ø15	78.4	

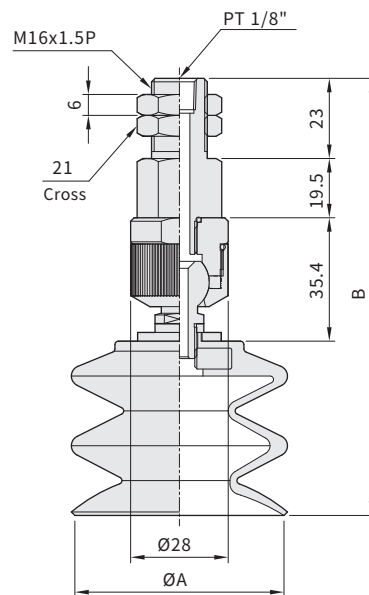
## Ø20, Ø30, Ø40



Unit: mm

Pad type	Model	Pad dia. A	Whole length B	Size of PU tube
Circle pad	PCF-20-R	Ø20	90.7	PU tube 6 x 4
	PCF-30-R	Ø30	99.7	
	PCF-40-R	Ø40	110.2	

## Ø60



Unit: mm

Pad type	Model	Pad dia. A	Whole length B	Size of PU tube
Circle pad	PCF-60-R	Ø60	125.5	PT 1/8"

PA

PB

PC

PAG

PAO

PAP

PAQ

PAW

PAL

PBL

PCL

PAR

PS

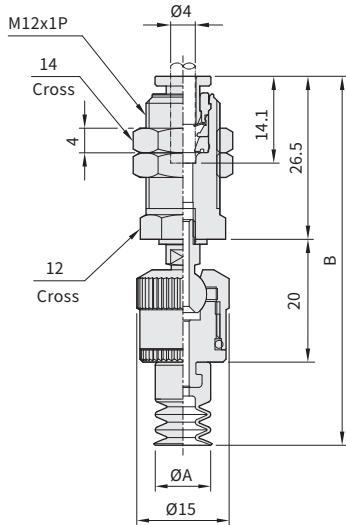
VP

# PC□ series 3-Stage Vacuum Pad

Dimensions-PCK-R series/ Vertical entry with fitting-Ball joint type

CHELIC

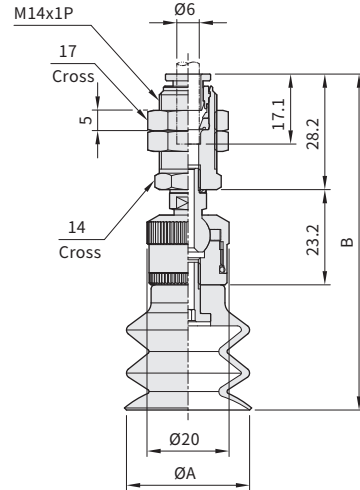
## ■ Ø10, Ø15



Unit: mm

Pad type	Model	Pad dia. A	Whole length B	Size of PU tube
Circle pad	PCK-10- <b>R</b>	Ø10	60	PU tube
	PCK-15- <b>R</b>	Ø15	67	Ø4xØ2.5

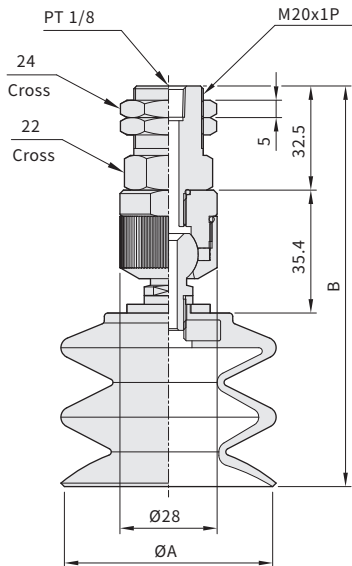
## ■ Ø20, Ø30, Ø40



Unit: mm

Pad type	Model	Pad dia. A	Whole length B	Size of PU tube
Circle pad	PCK-20- <b>R</b>	Ø20	72.5	PU tube 6 x 4
	PCK-30- <b>R</b>	Ø30	81.9	
	PCK-40- <b>R</b>	Ø40	92.4	

## ■ Ø60



Unit: mm

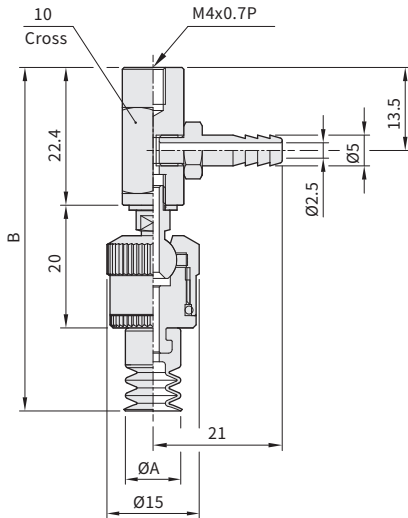
Pad type	Model	Pad dia. A	Whole length B	Size of PU tube
Circle pad	PCK-60- <b>R</b>	Ø60	115.5	PT 1/8

# PC□ series 3-Stage Vacuum Pad

Dimensions-PCT-R series/ Side entry-Ball joint type

CHELIC

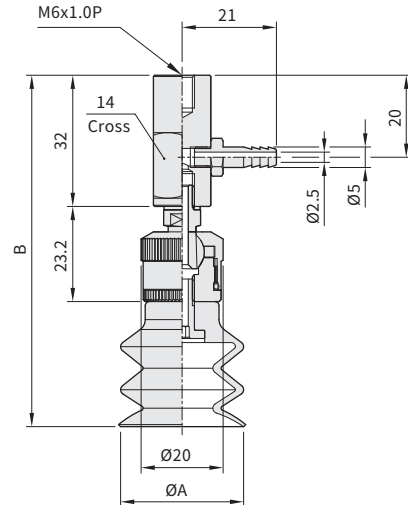
## ■ Ø5 ~ Ø15



Unit: mm

Pad type	Model	Pad dia. A	Whole length B	Size of PU tube
Circle pad	PCT-05-R	Ø10	51.9	PU tube 6 x 4
	PCT-07-R	Ø15	52.4	
	PCT-10-R	Ø10	55.9	
	PCT-15-R	Ø15	62.9	

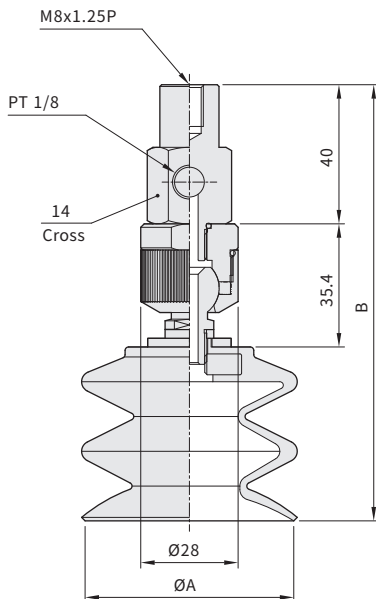
## ■ Ø20, Ø30, Ø40



Unit: mm

Pad type	Model	Pad dia. A	Whole length B	Size of PU tube
Circle pad	PCT-20-R	Ø20	76.7	PU tube 6 x 4
	PCT-30-R	Ø30	85.7	
	PCT-40-R	Ø40	96.2	

## ■ Ø60



Unit: mm

Pad type	Model	Pad dia. A	Whole length B	Size of PU tube
Circle pad	PCT-60-R	Ø60	125.5	PT 1/8

PA

PB

PC

PAG

PAO

PAP

PAQ

PAW

PAL

PBL

PCL

PAR

PS

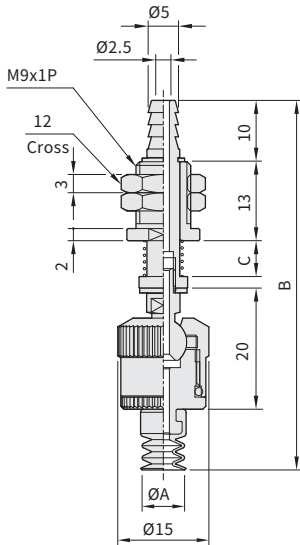
VP

# PC□ series 3-Stage Vacuum Pad

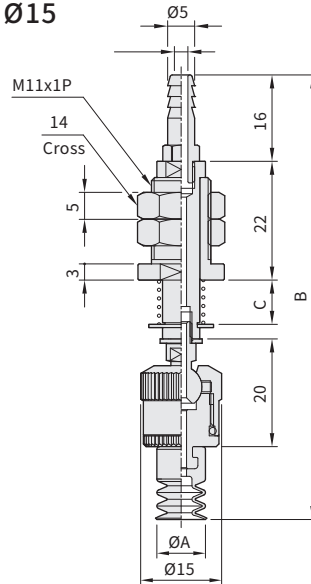
Dimensions-PCFS-R series/ Vertical entry with spring-Ball joint type

CHELIC

■ Ø5, Ø7



■ Ø10, Ø15



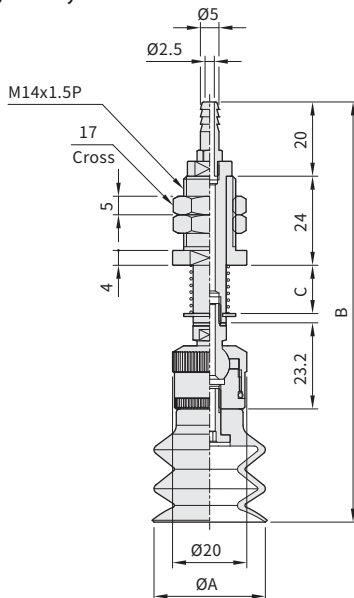
Unit: mm

Unit: mm

Pad type	Model	Pad dia. A	Stroke 3		Stroke 10		Size of PU tube	Spring compression length
			B	C	B	C		
Circle pad	PCFS-05-R	Ø5	60.4	6	74.4	20	PU tube 6 x 4	3, 10
	PCFS-07-R	Ø7	60.9	6	74.9	20		

Pad type	Model	Pad dia. A	Stroke 4		Stroke 10		Size of PU tube	Spring compression length
			B	C	B	C		
Circle pad	PCFS-10-R	Ø10	82.4	8	94.4	20	PU tube 6 x 4	4, 10
	PCFS-15-R	Ø15	89.4	8	101.4	20		

■ Ø20, Ø30, Ø40



Unit: mm

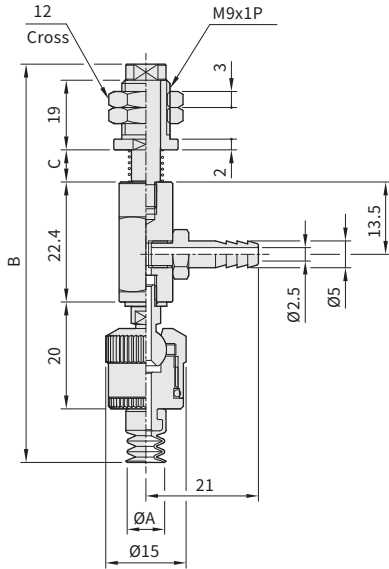
Pad type	Model	Pad dia. A	Stroke 6		Stroke 15		Size of PU tube	Spring compression length
			B	C	B	C		
Circle pad	PCFS-20-R	Ø20	104.2	13	121.2	30	PU tube 6 x 4	6, 15
	PCFS-30-R	Ø30	113.2	13	130.2	30		
	PCFS-40-R	Ø40	123.7	13	140.7	30		

# PC□ series 3-Stage Vacuum Pad

Dimensions-PCTS-R series/ Side entry with spring-Ball joint type

CHELIC

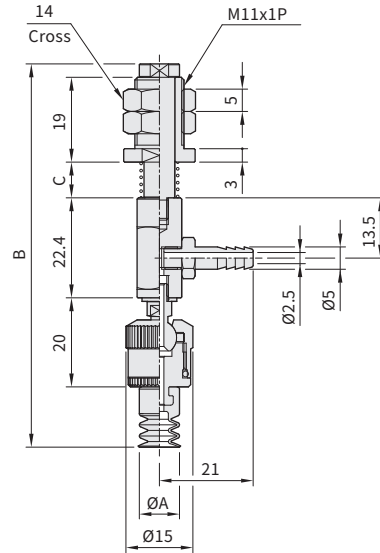
## Ø5, Ø7



Unit: mm

Pad type	Model	Pad dia. A	Stroke 3		Stroke 10		Size of PU tube	Spring compression length
			B	C	B	C		
Circle pad	PCTS-05-R	Ø5	73.9	6	87.9	20	PU tube 6 x 4	3, 10
	PCTS-07-R	Ø7	74.4	6	88.4	20		

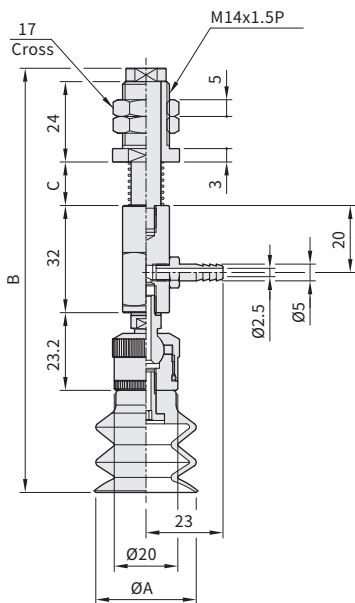
## Ø10, Ø15



Unit: mm

Pad type	Model	Pad dia. A	Stroke 4		Stroke 10		Size of PU tube	Spring compression length
			B	C	B	C		
Circle pad	PCTS-10-R	Ø10	65.9	8	77.9	20	PU tube 6 x 4	4, 10
	PCTS-15-R	Ø15	72.9	8	84.9	20		

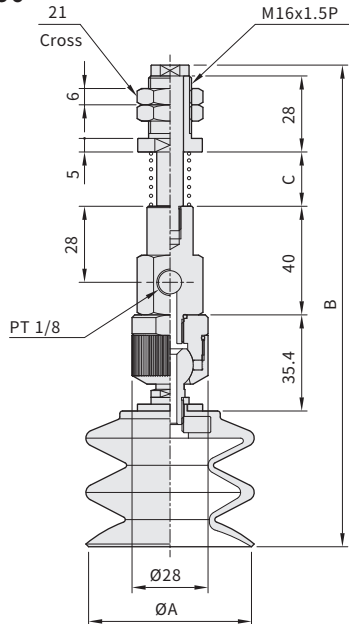
## Ø20, Ø30, Ø40



Unit: mm

Pad type	Model	Pad dia. A	Stroke 6		Stroke 15		Size of PU tube	Spring compression length
			B	C	B	C		
Circle pad	PCTS-20-R	Ø20	94.5	13	111.5	30	PU tube 6 x 4	6, 15
	PCTS-30-R	Ø30	103.5	13	120.5	30		
	PCTS-40-R	Ø40	114	13	131.5	30		

## Ø60



Unit: mm

Pad type	Model	Pad dia. A	Stroke 10		Stroke 30		Size of PU tube	Spring compression length
			B	C	B	C		
Circle pad	PCTS-60-R	Ø60	177.5	20	217.5	60	PT 1/8	10, 30

PA

PB

PC

PAG

PAO

PAP

PAQ

PAW

PAL

PBL

PCL

PAR

PS

VP