

## Merkmale

- rastet in drei Stellungen ein
- robustes Metallgehäuse
- Klarsichtdeckel zur optimalen Funktionskontrolle
- großzügiger Anschlussraum
- geräuscharme Funktionsweise
- einfache Justage durch viele Verstellmöglichkeiten
- zwangsgeführte Öffnerkontakte
- Sonderausführung mit bis zu acht Kontaktpaaren in fast beliebiger Schaltung (Abwicklung)

## features

- engages in three positions
- robust metal enclosure
- transparent cover for optimal function control
- large connection area
- quiet functioning
- easy adjustment due to various adjustment options
- positively driven normally closed contacts
- special version with up to eight contact pairs in almost any contact arrangement (factory options)

## Bestellangaben / order information codes:

		<b>US - X - YY</b>			
Grundgerät / basic type:	_____	_____	_____	Kontaktabwicklung / contact arrangement:	
<b>US</b>	Umschalter / direction limit switch			ohne Angabe without specification	Standardausführung standard version
Anzahl der Kontakte / number of the contacts:	_____	_____	_____	YY	siehe Schaltwege-Diagramm see contact sequence diagram
	ohne Angabe without specification	3-polig 3-pole			
X	siehe Schaltwege-Diagramm see contact sequence diagram				

**Technische Daten:**

Normen	EN 81-20, EN 81-50, EN 60947-5-1
Schaltleistung	U <sub>i</sub> = 500 V I <sub>th</sub> = 6 A U <sub>imp</sub> = 4 kV
Kurzschlussfestigkeit	AC-15: U <sub>e</sub> = 230 V I <sub>e</sub> = 6 A DC-13: U <sub>e</sub> = 200 V I <sub>e</sub> = 0,3 A
Kontaktwerkstoff	T10 A F 16 A
Betätigungs- / Rückstellkraft	Feinsilber
Anschluss	0,65 N (rastend)
Schutzart	über Schlitzmutter max. 2,5 mm <sup>2</sup> , Kabeleinführung 2x M20x1,5
Umgebungstemperatur	IP40
Einbaulage	-30 °C bis +80 °C
Gewicht	beliebig
	820 g

**technical data:**

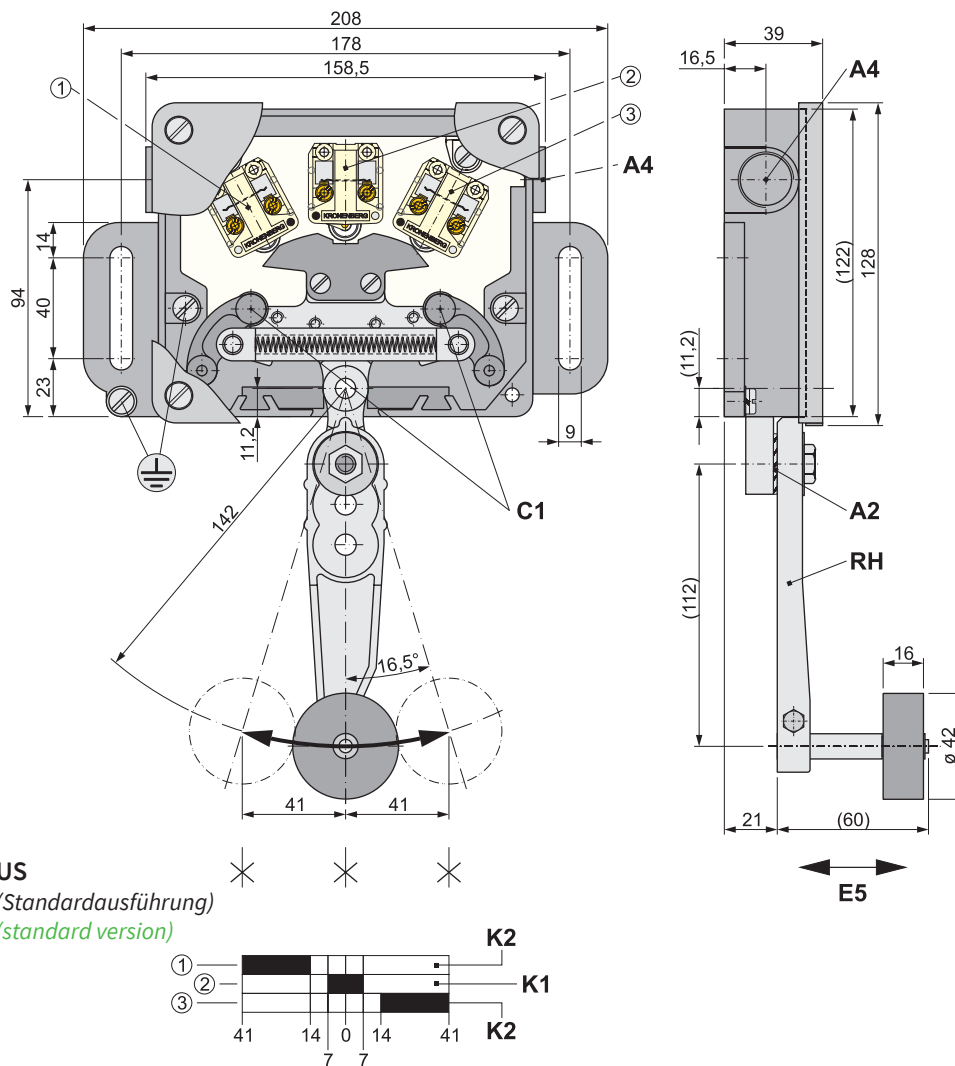
norms	EN 81-20, EN 81-50, EN 60947-5-1
switching capacity	U <sub>i</sub> = 500 V I <sub>th</sub> = 6 A U <sub>imp</sub> = 4 kV
short-circuit capacity	AC-15: U <sub>e</sub> = 230 V I <sub>e</sub> = 6 A DC-13: U <sub>e</sub> = 200 V I <sub>e</sub> = 0.3 A
contact material	T10 A F 16 A
actuation- / return force	fine silver
connection	0.65 N (stay-put)
level of protection	by slot nut max. 2.5 mm <sup>2</sup> , cable entry 2x M20x1.5
ambient air temperature	IP40
installation position	-30 °C up to +80 °C
weight	any
	820 g





**Zubehör / accessories:**

UK-K	Umschaltkurve (zweiteilig), kurze Ausführung direction ramp (two-part), short version
UK-L	Umschaltkurve (zweiteilig), lange Ausführung direction ramp (two-part), long version

Geräteabmessungen / device dimensions:

dargestellt: US (Standardausführung)  
shown: US (standard version)

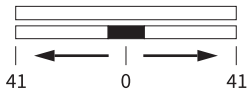


-  Kontakt geschlossen (zwangsöffnend)  
contact closed (positively opening)
-  Kontakt offen  
contact open
-  Betätigungsrichtung / actuating direction
-  Raststellungen / stay-put positions

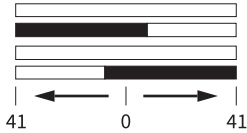
- A2 Zahnscheibe, zwischen den Hebeln angeordnet  
tooth pad, arranged between the levers
- A4 Kabeleinführung / cable entry
- C1 Rastrolle / stay-put roller
- E5 Position der Gummirolle (G60) einstellbar  
position of the rubber roller (G60) adjustable
- K1 Zwangsöffner  
positively driven normally closed contact
- K2 Schließkontakt  
normally open contact
- RH Rollenhebel, Position einstellbar  
roller lever, position adjustable

Schaltweg-Diagramme (Sonderschaltungen)  
contact sequence diagrams (special circuits):

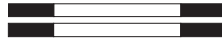
US-1-31



US-2-10



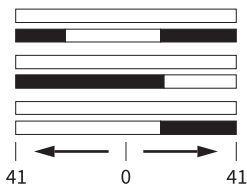
US-2-39



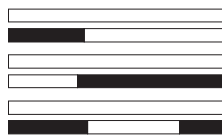
US-2-42



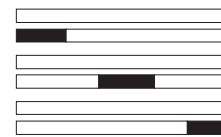
US-3-01



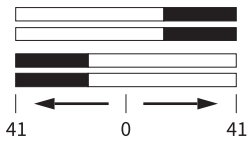
US-3-02



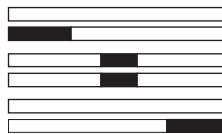
US-3-09



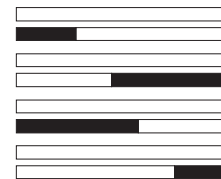
US-4-11



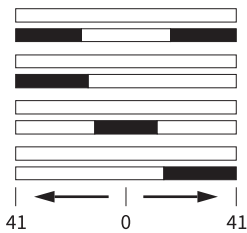
US-4-12



US-4-16



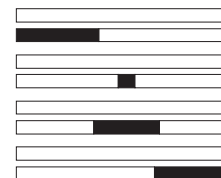
US-4-18



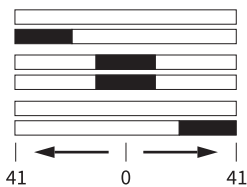
US-4-19



US-4-20



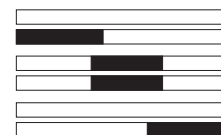
US-4-29



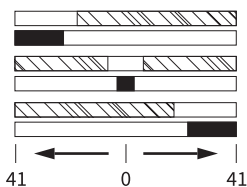
US-4-30



US-4-33



US-6-35



- Betätigungsrichtung in mm*  
*actuating direction in mm*
- Kontakt geschlossen (zwangsendfänger)*  
*contact closed (positively opening)*
- Kontakt offen*  
*contact open*
- Kontakt geschlossen (kein Zwangsendfänger)*  
*contact closed (no positively driven normally closed contact)*