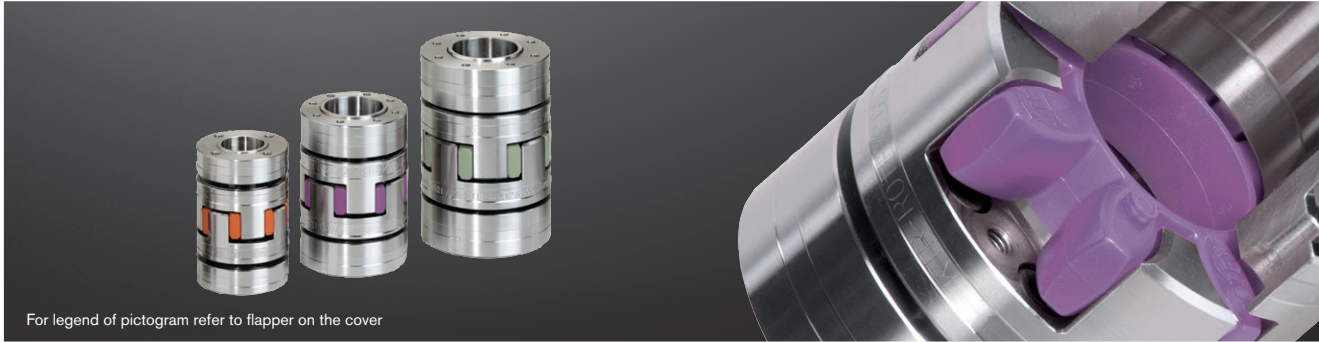
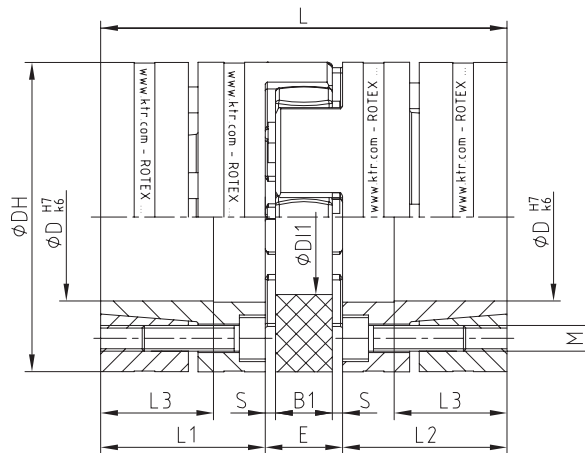


ROTEX® Flexible jaw couplings

Clamping ring hubs



For legend of pictogram refer to flapper on the cover



Extraction thread M1 between clamping screws.

Clamping ring hubs steel

Size	Torques [Nm] ¹⁾				Dimensions [mm]								Clamping screws			Weight per hub with max. bore [kg]	Mass moment of inertia per hub with max. bore [kgm ²]	
	92 ShA		98 ShA		DH ²⁾	DI1	L	L1, L2	L3	E	B1	S	M	Z = number	T _A [Nm]			M1
	TKN	TK max	TKN	TK max														
19	10.0	20	17	34	40	18	66	25	18	16	12	2.0	M4	6	4.1	M4	0.179	0.44 x 10 ⁻⁴
24	35.0	70	60	120	55	27	78	30	22	18	14	2.0	M5	4	8.5	M5	0.399	1.91 x 10 ⁻⁴
28	95.0	190	160	320	65	30	90	35	27	20	15	2.5	M5	8	8.5	M5	0.592	4.18 x 10 ⁻⁴
38	190.0	380	325	650	80	38	114	45	35	24	18	3.0	M6	8	14	M6	1.225	12.9 x 10 ⁻⁴
42	265	530	450	900	95	46	126	50	35	26	20	3.0	M8	4	35	M8	2.30	31.7 x 10 ⁻⁴
48	310	620	525	1050	105	51	140	56	41	28	21	3.5	M10	4	69	M10	3.08	52.0 x 10 ⁻⁴
55	375	750	685	1370	120	60	160	65	45	30	22	4.0	M10	4	69	M10	4.67	103.0 x 10 ⁻⁴
65	—	—	940	1880	135	68	185	75	55	35	26	4.5	M12	4	120	M12	6.70	191.0 x 10 ⁻⁴
75	—	—	1920	3840	160	80	210	85	63	40	30	5.0	M12	5	120	M12	9.90	396.8 x 10 ⁻⁴
90	—	—	3600	4500	200	104	245	100	75	45	34	5.5	M16	5	295	M16	17.70	1136 x 10 ⁻⁴

Bore D and the respective transmittable friction torques T_R of clamping ring hub in [Nm] ¹⁾

Size	Ø10	Ø11	Ø14	Ø15	Ø16	Ø19	Ø20	Ø24	Ø25	Ø28	Ø30	Ø32	Ø35	Ø38	Ø40	Ø42	Ø45	Ø48	Ø50	Ø55*	Ø60*	Ø65*	Ø70*	Ø80*	Ø90*	Ø95*	Ø100*	Ø105*
19	27	32	69	84	57	94	110																					
24			70	87	56	97	114	116	133	192																		
28				108	131	207	148	253	285	315	382	330	433	503														
38							208	353	395	439	531	463	603	593	689	793	776											
42									445	495	595	526	678	671	775	718	872	1043	1061									
48										616	704		899	896	1030	962	1160	1379	1222	1543								
55													863	856	991	918	1119	1110	1247	1277	1665	1605	2008					
65															1446	1355	1637	1635	1827	1887	2429	2368	2930					
75																1710	2053	2059	2294	2384	3040	2983	3664	4293				
90																			3845	4249	4794	5858	5900	7036	8047	9247	9575	10845

¹⁾ For selection see page 14 et seqq.

²⁾ ØDH + 2 mm with high speeds for expansion of spider

The transmittable torques of the clamping connection consider the max. clearance with shaft clearance k6/bore H7, from Ø55 G7/m6. The torque is reduced with bigger clearance. For the strength calculation of shaft/hollow shaft see KTR standard 45510 on our homepage www.ktr.com.

Ordering example:

ROTEX® GS 24	98 ShA	6.0 steel	Ø24	6.0 steel	Ø20
Coupling size	Spider hardness	Hub type	Finish bore	Hub type	Finish bore