

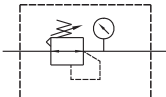
MAR403 series

PRESSURE REGULATOR

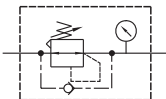


Option: **MP41**

Symbol



Standard



Backflow

Specification

Model	MAR403		
Bore No.	8A	10A	15A
Port size	1/4	3/8	1/2
Medium	Air		
Max. operating pressure	1 MPa		
Proof pressure	1.5 MPa		
Regulated pressure range	0.1~0.85 MPa		
Ambient temperature	- 5~+60°C (No freezing)		
Attachment	Pressure gauge (PG-20)		
Weight	450 g		

Order example

MAR403 K - 8A - [] - [] [] [] - E1 - [] - []

MODEL Blank: Standard
K: Backflow function
* The caution please refer to page 4-83.

PORT SIZE
8A: 1/4
10A: 3/8
15A: 1/2

EXHAUST MECHANISM
Blank: Relieving type
Q: Non-relieving type

(Option) PRESSURE SWITCH
E1: MP41P-022
E2: MP41P-022-QD
E5: MP41P-042
E6: MP41P-042-QD

(Option) BRACKET
Blank: Without
B2: Screw fixed

PORT THREAD
Blank: Rc thread
G: G thread
NPT: NPT thread

(Option)

Pressure gauge	Pressure switch	Flow direction
Blank: Pressure gauge (PG-20) C: External pressure gauge (PG-40) + Gauge adapter set (A-MAR302) A: Gauge adapter set (A-MAR302)	P: Pressure switch (MPS series)	Blank: Left to right R: Right to left

- * There is no pressure gauge in option (A). Please purchase if necessary.
- * PG-40 (C), A-MAR302 (A) and MP41 (E*) can not be selected at the same time.
- * Refer to page 5-13 for the option of digital pressure switch MP41 (E*).
- * Standard type regulator can not release the outlet pressure completely, even if inlet pressure was cut off, and the backflow function (K) must be applied to completely remove the residual pressure.
- * The (Q) non-relieving type regulator is used. When the output pressure is higher than the set pressure, the output pressure will not flow out through the exhaust hole.

Flow feature

